

# SERIES 23

---

## Stainless Steel Bulkhead Gates

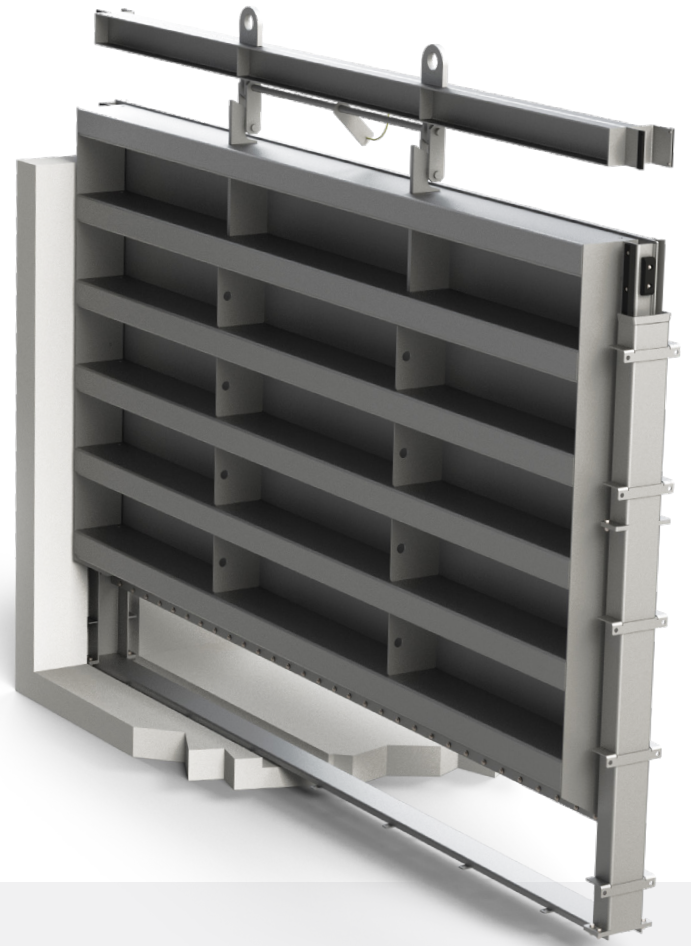


## Application

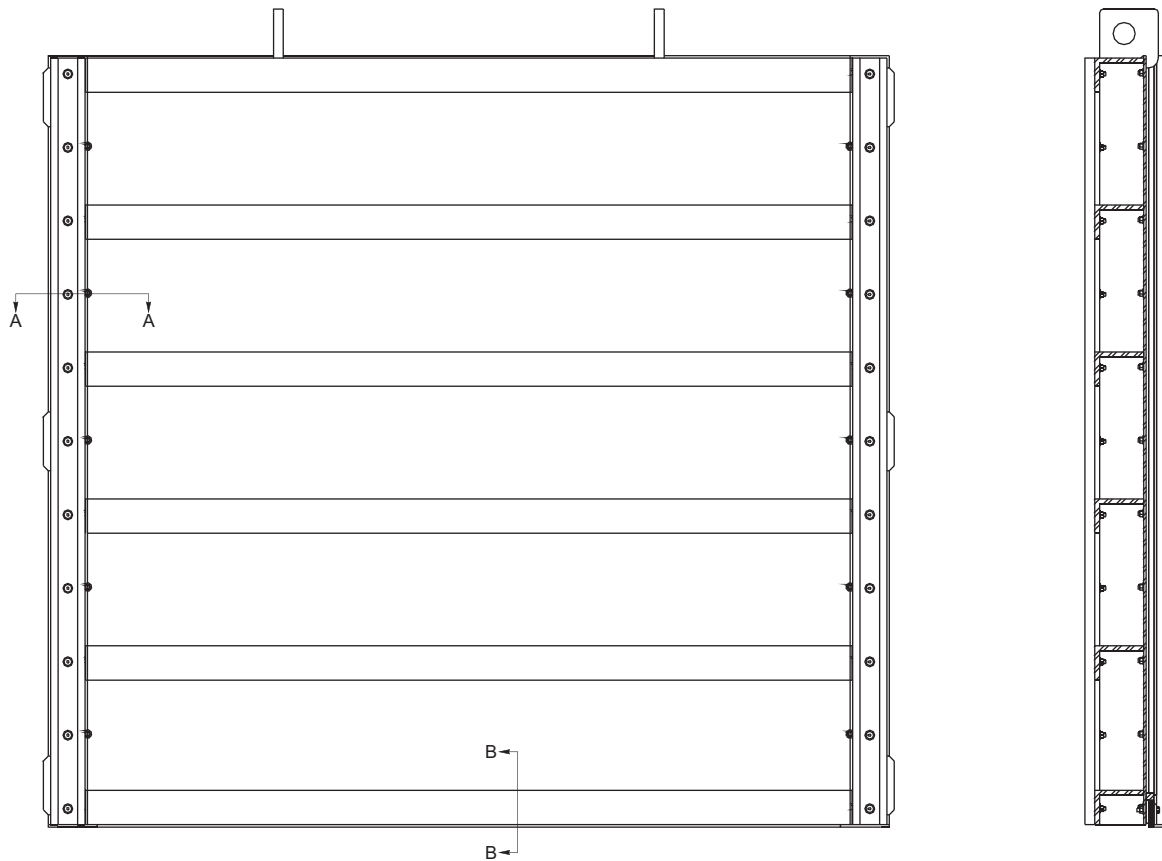
Bulkhead Gates **SERIES 23** are used to shut off water flow in structures to enable maintenance or repairs on other equipment or for emergency purposes. They are also used to divert flow of water in different areas of a plant. Bulkheads are also referred to as Stop Shutters or Intake Gates and can be stacked one over the other like Stop Logs to limit the weight of the Bulkhead for manipulation.

### Seals

The sealing system consists of a "P"-seal installed on each side of the Bulkhead and a resilient seal on the bottom (Details 23-04, 05). Gates are available with or without top seal. "P"- seals can be provided in different materials to suit the particular needs of each application.

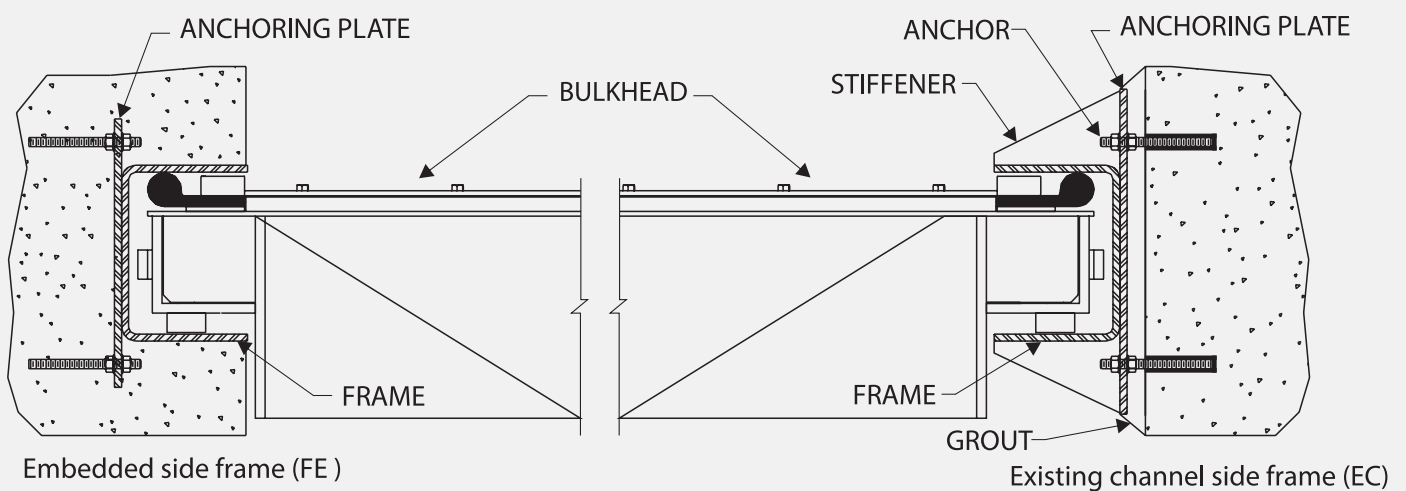


**Typical SERIES 23 installation**

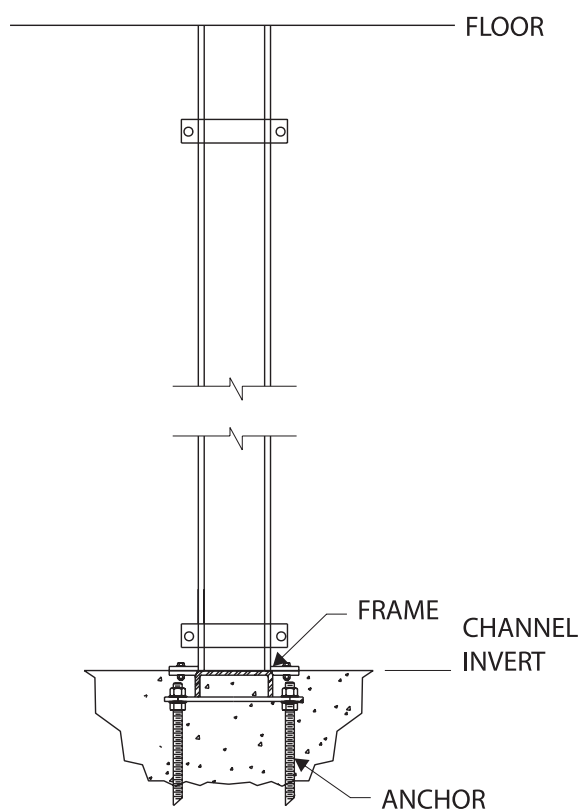


**Fig. 23-1**  
Bulkhead gate

Built in stainless steel, **SERIES 23** Bulkheads can also be equipped with a top seal to shut off a submerged opening. The most common mountings are embedded or surface mounted in a channel (Figure 23-02).

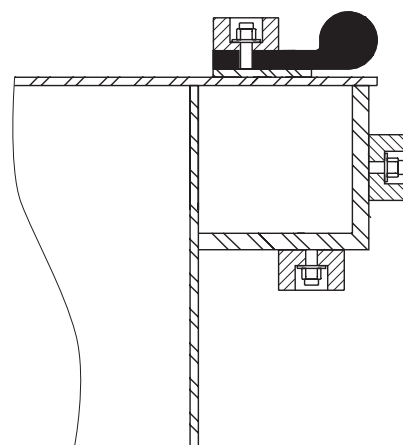


**Fig. 23-02**  
Embedded frame and side-wall mounted view of  
the side frame



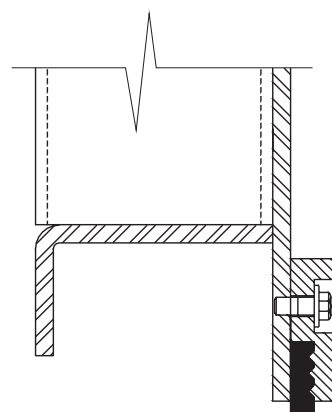
**Fig. 23-03**

Cross section of the bottom frame



**Fig. 23-04**

Side section "A-A"



**Fig. 23-05**

Bottom section "B-B"

Bulkheads are operated with a crane and can be supplied with a lifting device to allow the crane to pick up the gate at a lower elevation.

#### **Head office**

20, Route de Windsor  
Sherbrooke, Quebec Canada  
J1C 0E5

#### **Fontaine-Aquanox Plant**

4065 Blvd. Portland,  
Sherbrooke, Quebec Canada  
J1L 1X9

#### **Contact**

1 855 769-0157  
[info@ISEaquanox.com](mailto:info@ISEaquanox.com)  
[www.ISEaquanox.com](http://www.ISEaquanox.com)



---

A Division of ISE Metal Inc.

