

SERIES 61

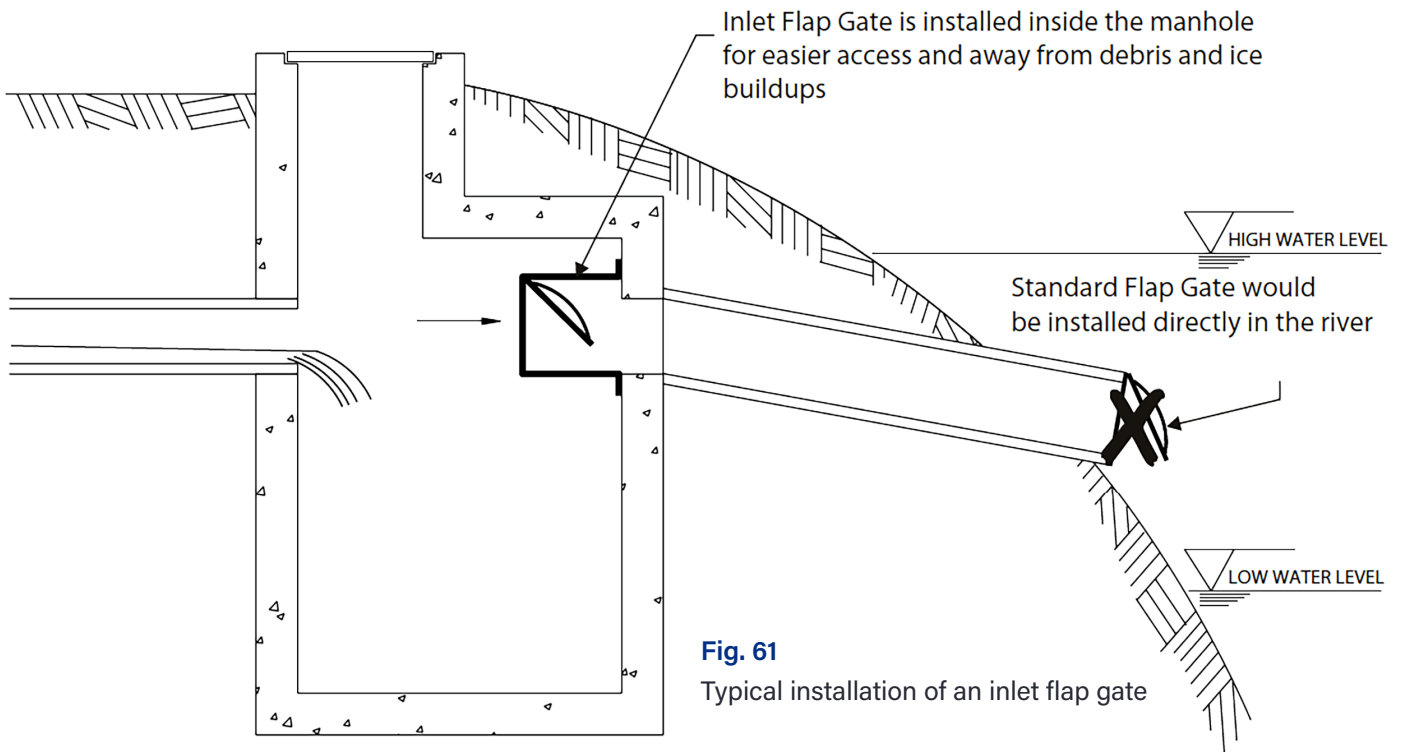
Inlet Flap Gates



Application

Fontaine-Aquanox **SERIES 61**. Inlet flap gates are often used in cold climates or simply when space does not permit a standard flap gate. The gate is mounted inside a square or round manhole on the concrete wall. The front panel is removable for easy access to the flap. A self-lubricating UHMWPE bushing in the hinges prevents metal-to-metal contact thereby reducing friction and easing the operation. Even if the gate is not used for a long period of time, there is no risk that the hinges will rust or seize.





Flap Gates 24" (610 mm) and smaller

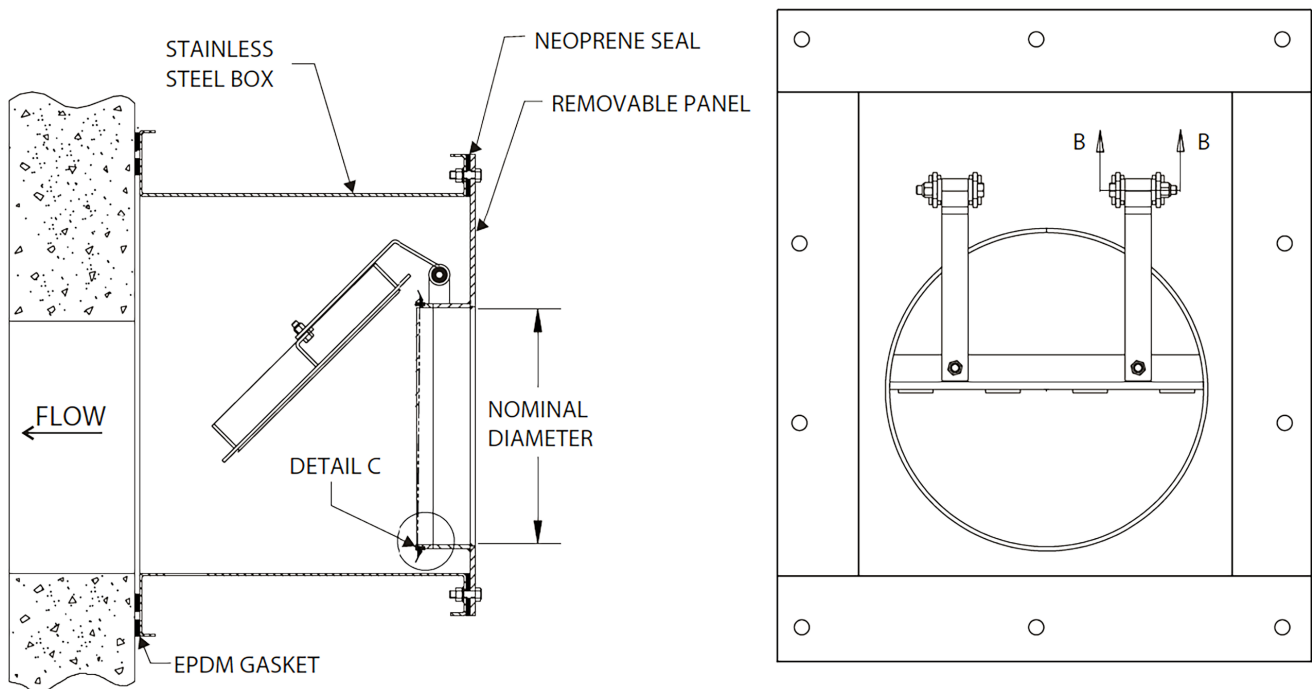
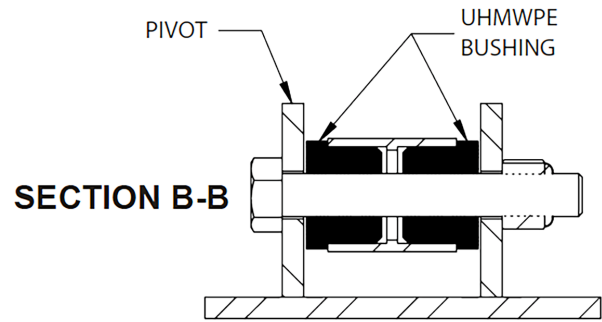
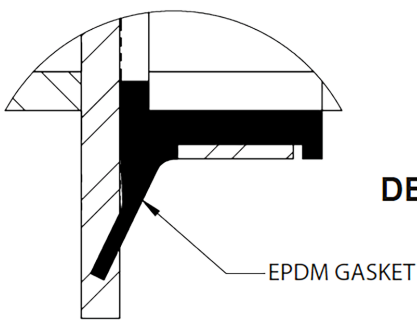


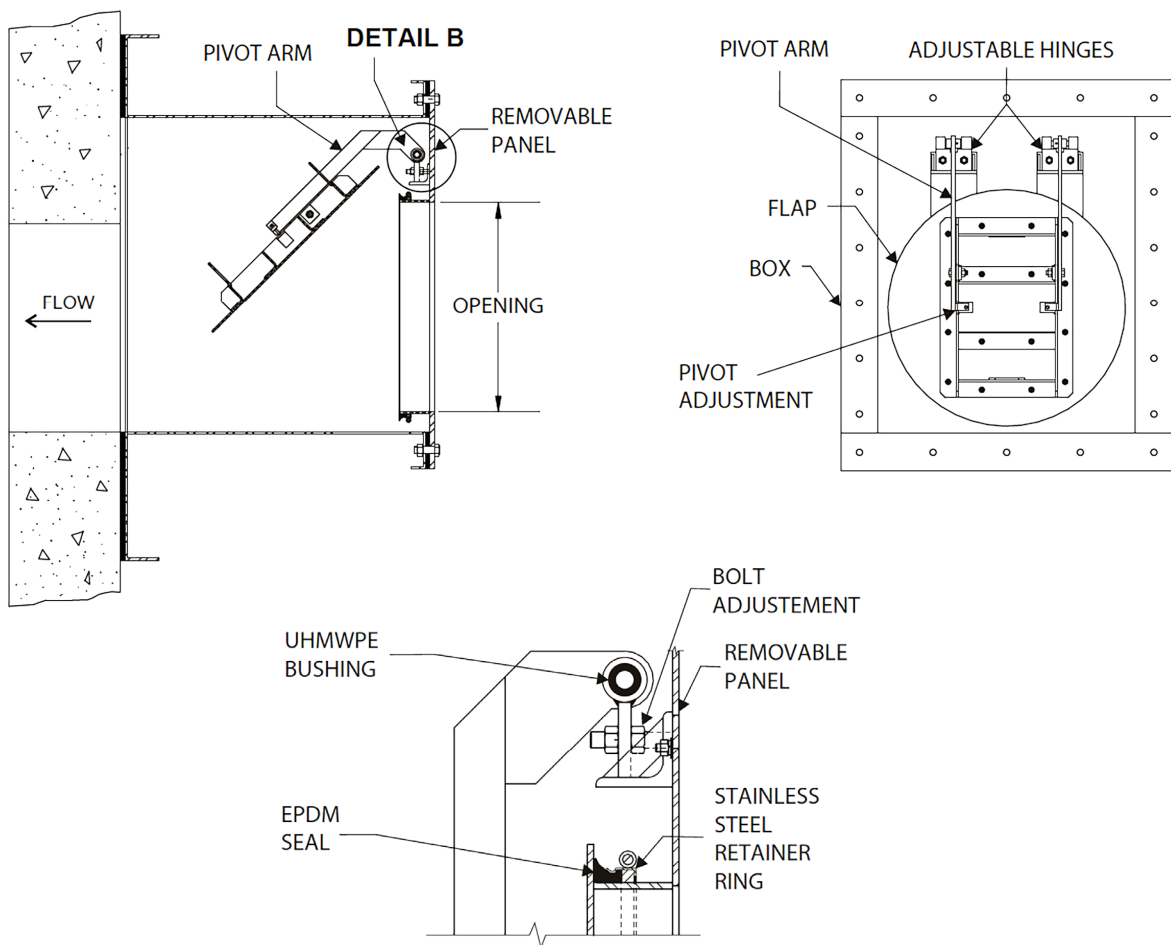
Fig. 61-01
Inlet flap gate sizes 8" to 24"



Flap Gates 30" (762 mm) and over

Fig. 61-02

Inlet flap gate sizes 30" and over



DETAIL B

Seal and hinges for flaps 30" and over

Mountings

The frame can be manufactured to be mounted on any installation. Figures 61-03 through 61-06 show different types of mounting.

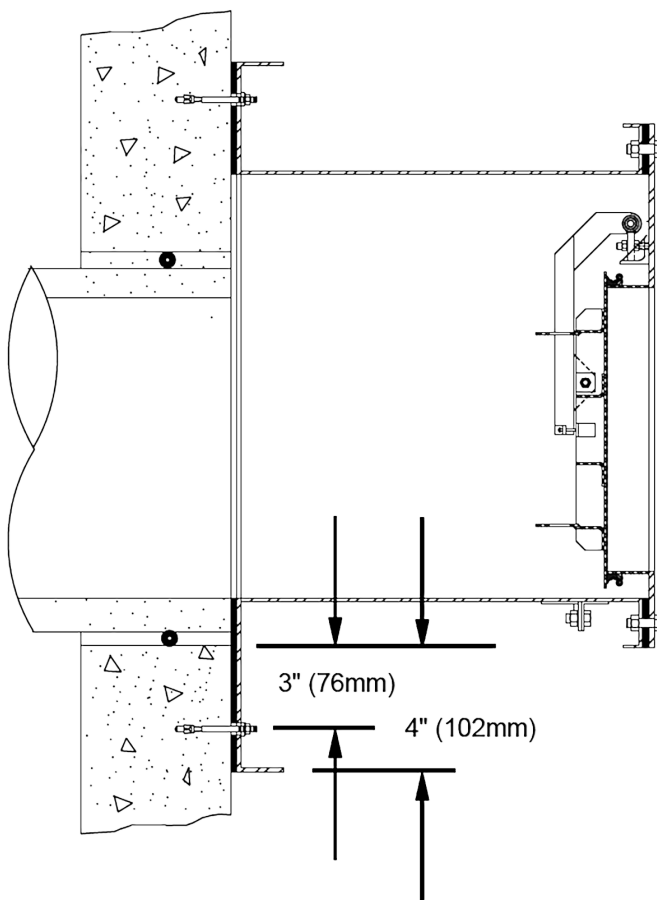


Fig. 61-03
In front of a flush pipe on a concrete wall (CWX)

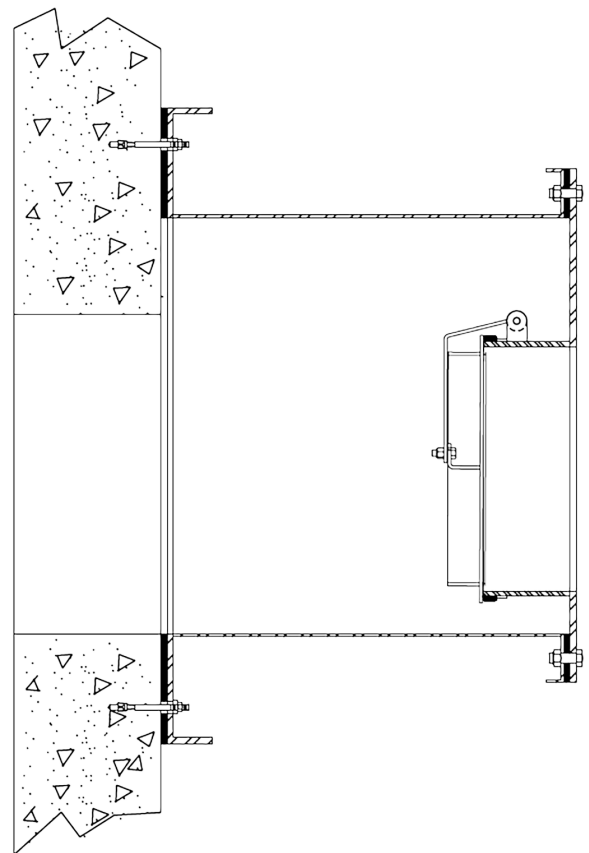


Fig. 61-04
On the face of a concrete wall (CW)

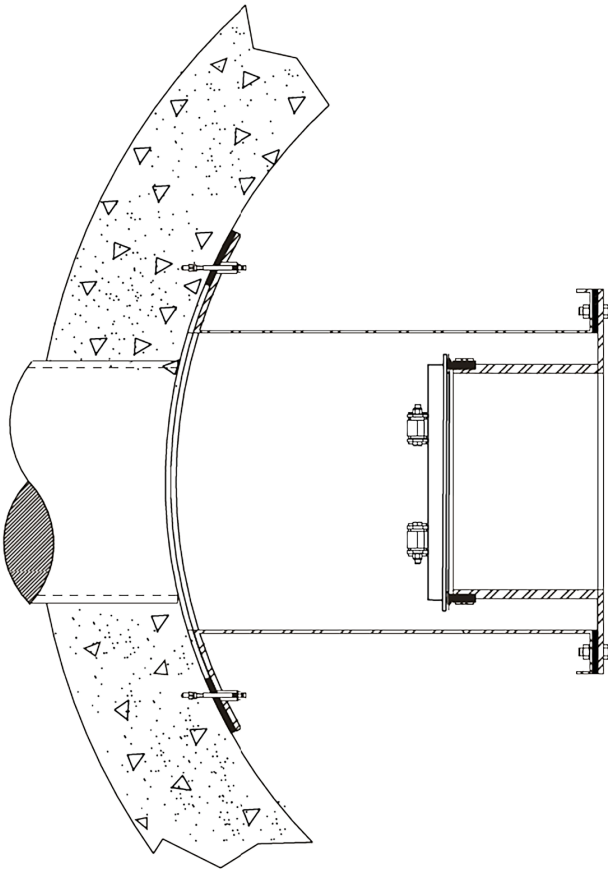


Fig. 61-05
Inside a round manhole in
front of a flush pipe (RMX)

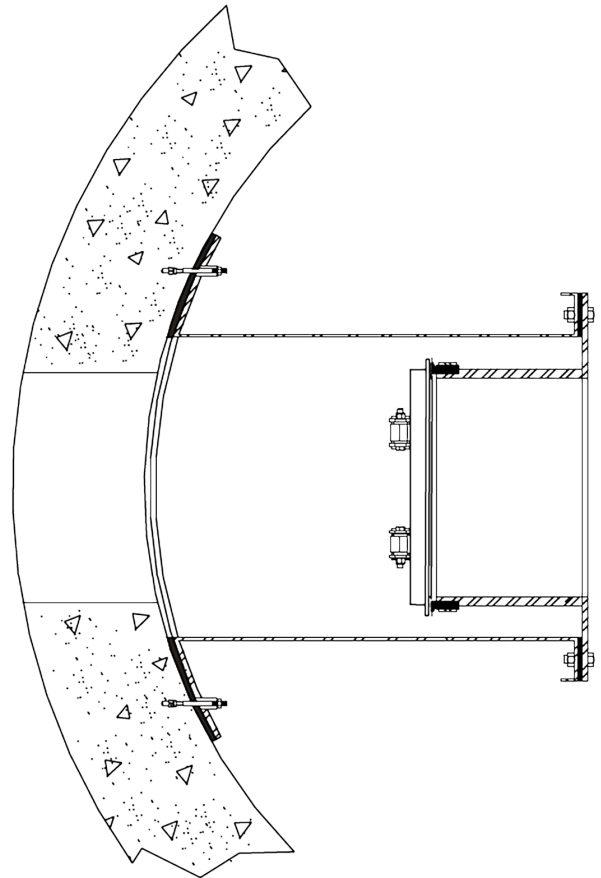


Fig. 61-06
Inside a round manhole
(RM)

Head office

20, Route de Windsor
Sherbrooke, Quebec Canada
J1C 0E5

Fontaine-Aquanox Plant

4065 Blvd. Portland,
Sherbrooke, Quebec Canada
J1L 1X9

Contact

1 855 769-0157
info@ISEaquanox.com
www.ISEaquanox.com

