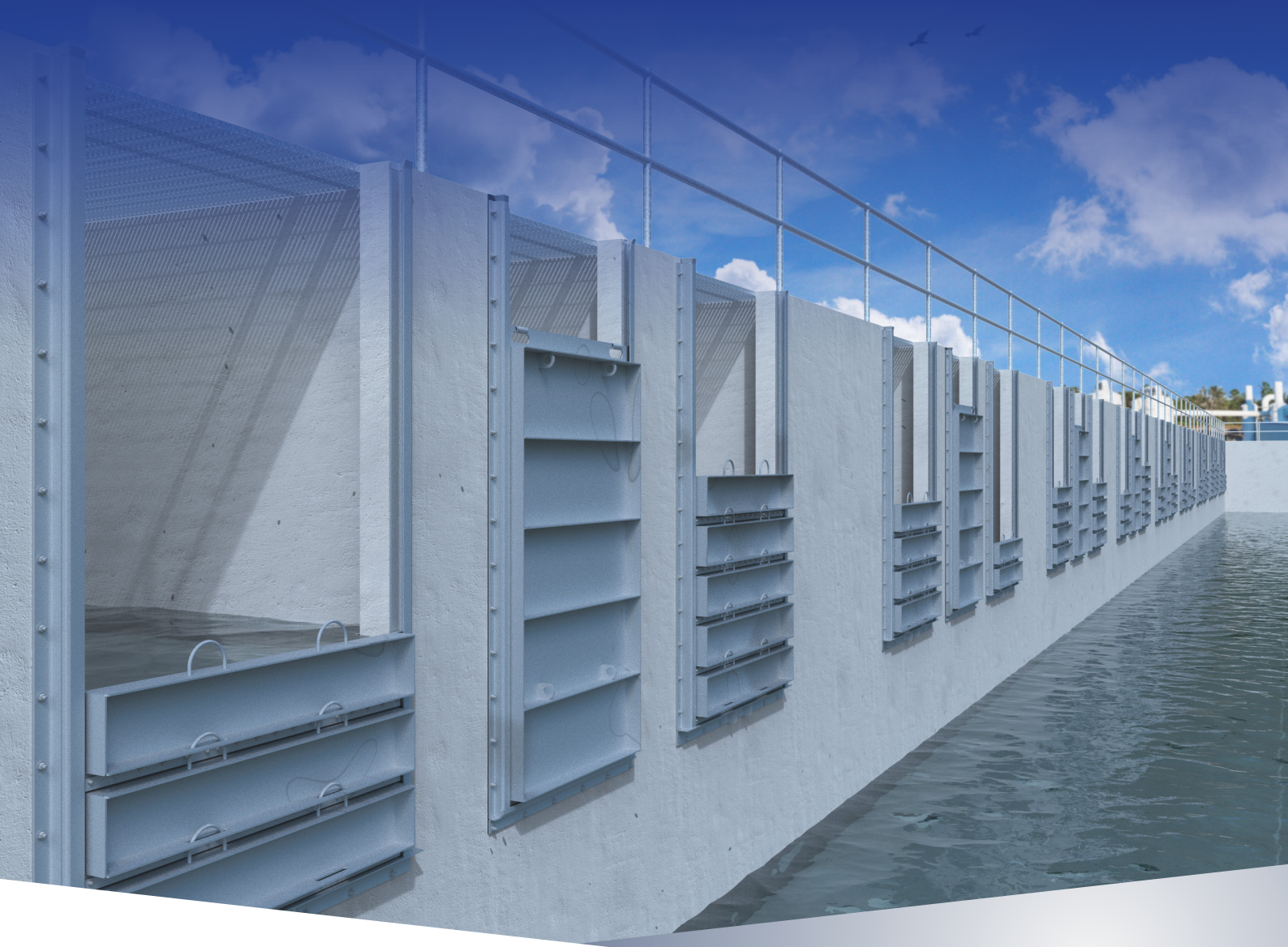


SERIES 95

Stop Logs



Application

The Fontaine-Aquanox **SERIES 95** stop logs are designed to isolate water flows and/or water level control in channels. The maximum allowable leakage rate is 0.1 usgpm per foot of perimeter (1.25 l/min per meter) in seating and unseating head conditions (head conditions taken as the height of the stack of logs). Logs typically seal in one direction only, and can be reversed to seal in the opposite direction. As an option, the logs can also be designed to seal in both directions (bi-directional sealing) without manipulation.

Stainless Steel construction

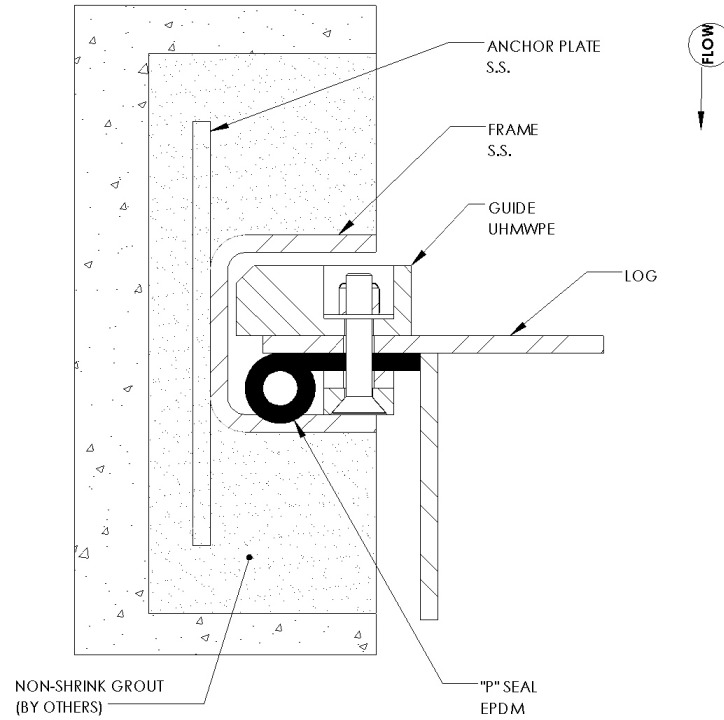
The **SERIES 95** stop log frames are manufactured from stainless steel. The logs are offered in two versions: stainless steel or aluminium. The Fontaine-Aquanox design allows great mounting flexibility, the result being light weight and easy-to-install stop logs. They are generally supplied with a lifting device to facilitate insertion of the logs to the crane or chainblock and subsequently into the frame, without having to send personnel to the lower levels.

The **SERIES 95** stainless steel frame is generally designed for installation in an existing channel or embedded into the walls of a new channel. It is also available in flange back design for installation on a concrete wall at the end of a channel. The bottom section is available in a flush-bottom version (embedded or wall mounted) or surface mounted when installed in an existing channel.

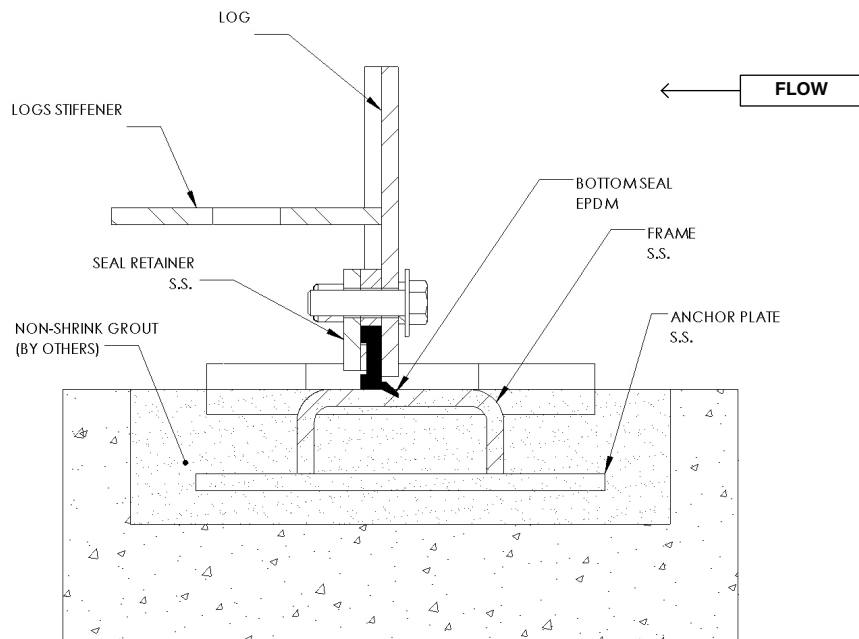


Mountings

FE - Embedded

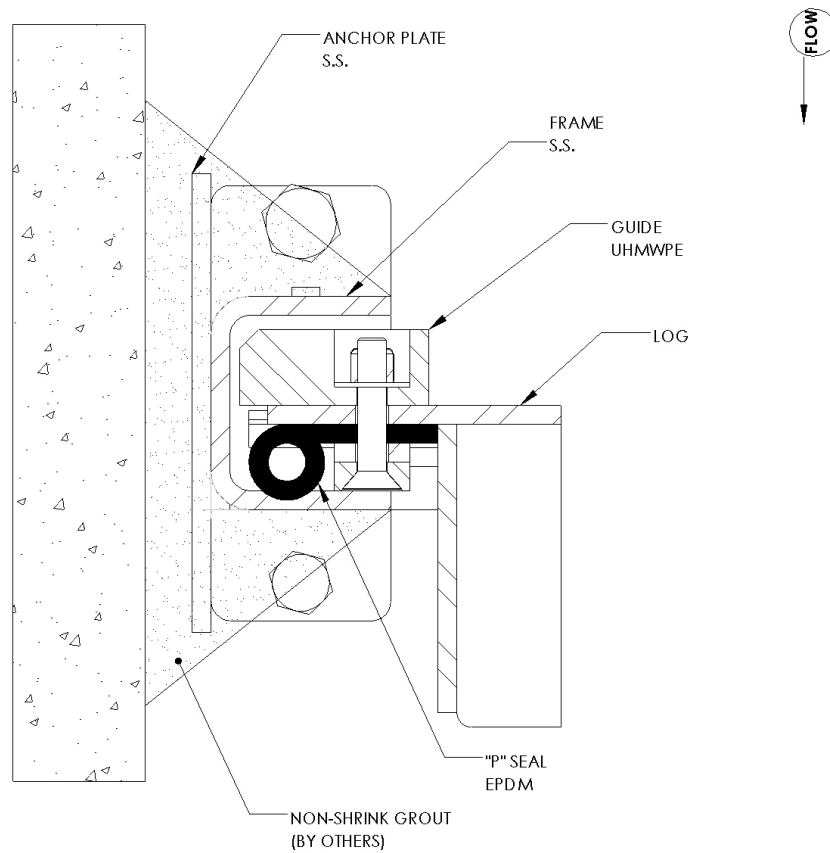


SIDE SEAL CROSS SECTION

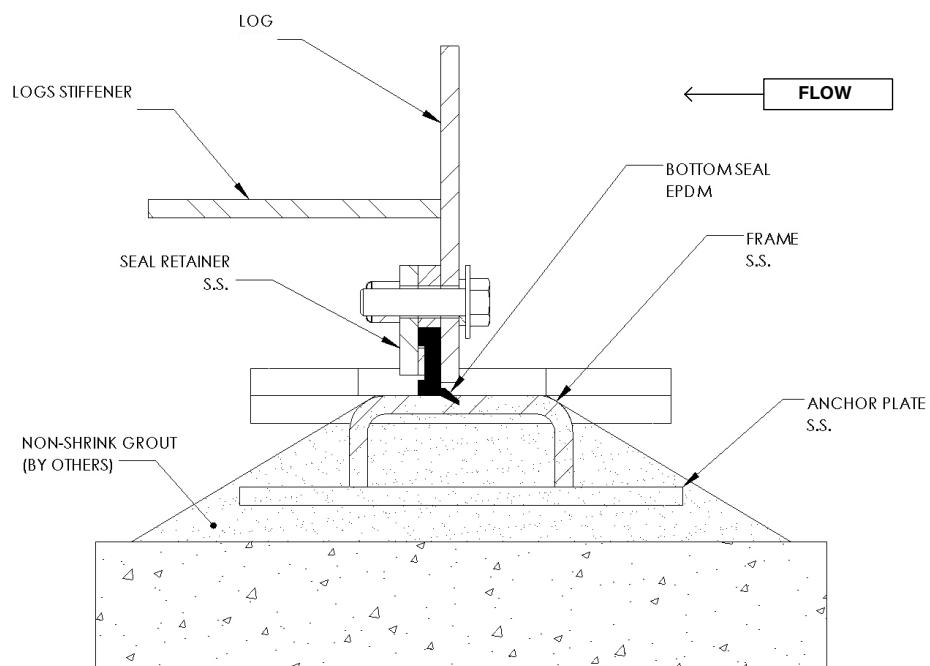


BOTTOM SEAL CROSS SECTION

EC - Surface mounted

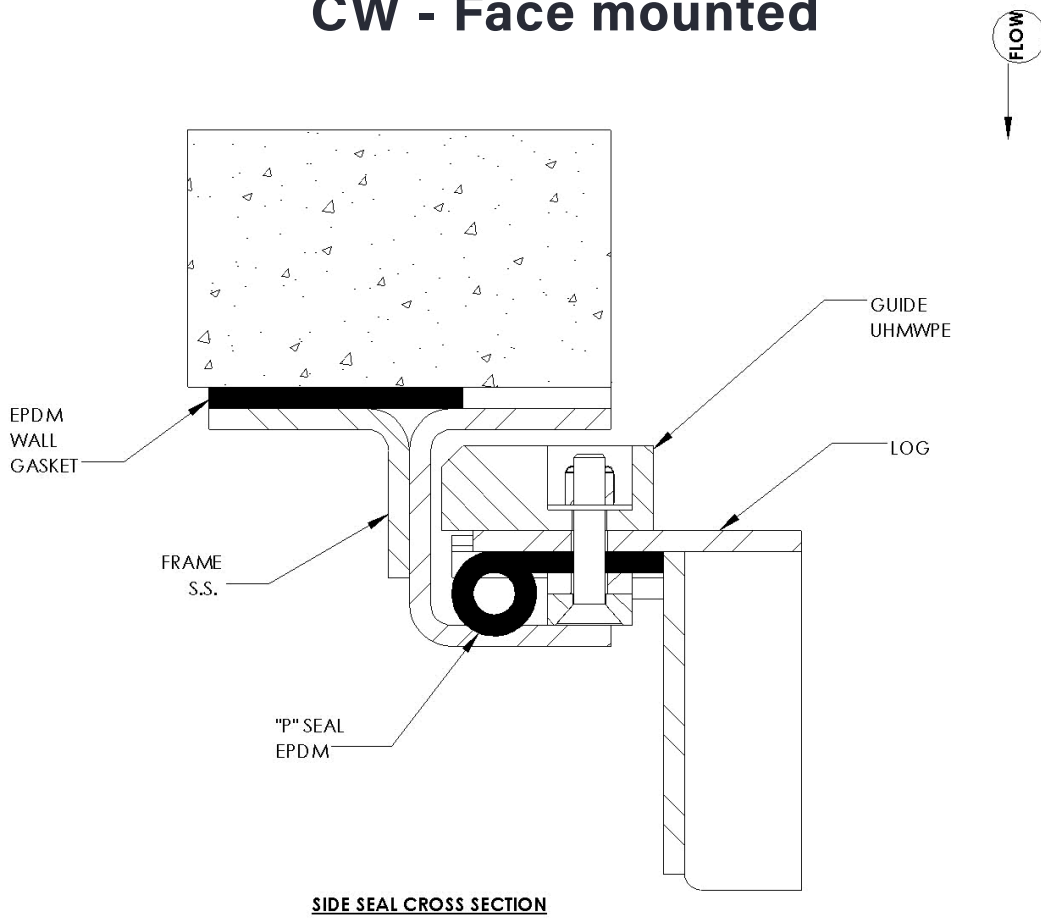


SIDE SEAL CROSS SECTION

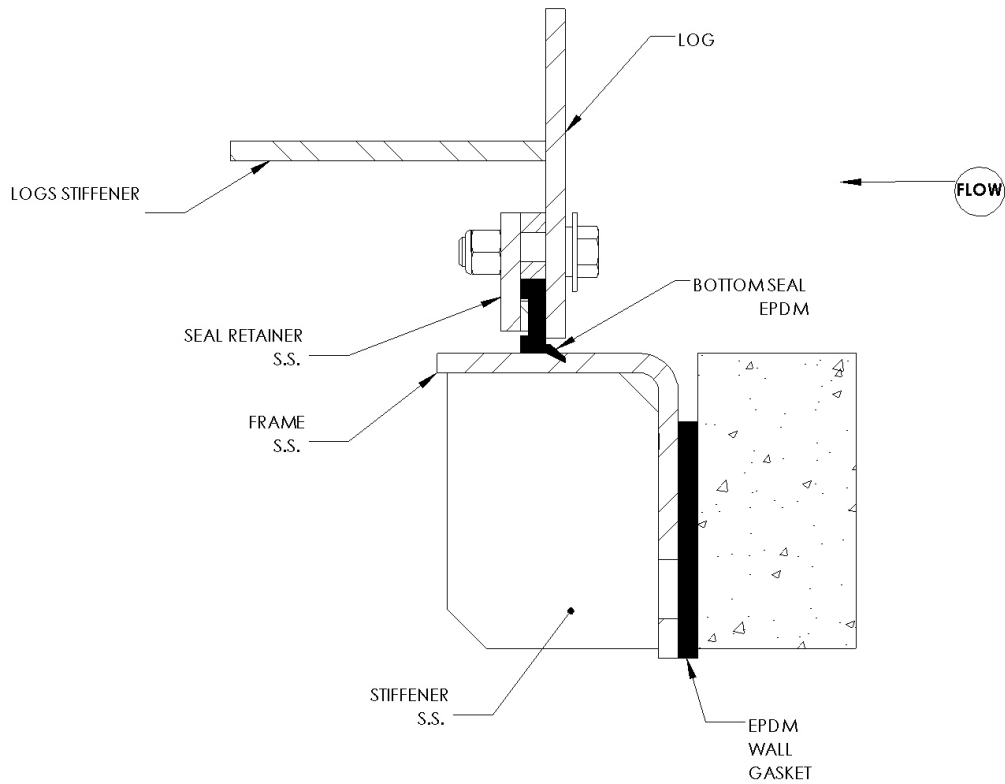


BOTTOM SEAL CROSS SECTION

CW - Face mounted



SIDE SEAL CROSS SECTION



BOTTOM SEAL CROSS SECTION

Stainless Steel Lifting Device

Also available is a lifting device to reach the logs at a lower elevation. The lifting device is fabricated in stainless steel and is adjusted to fit in the stop log's frame.

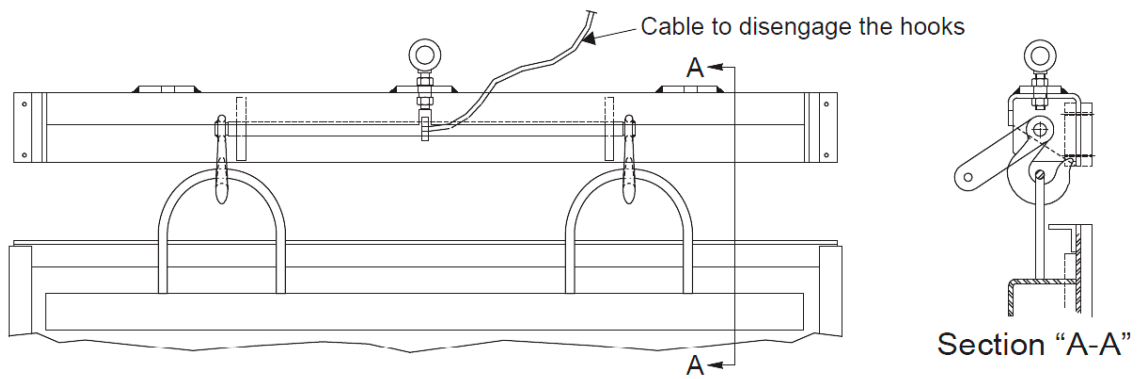


Fig. 95 - 04

Head office

20, Route de Windsor
Sherbrooke, Quebec Canada
J1C 0E5

Fontaine-Aquanox Plant

4065 Blvd. Portland,
Sherbrooke, Quebec Canada
J1L 1X9

Contact

1 855 769-0157
info@ISEaquanox.com
www.ISEaquanox.com

