

SERIES N

Standardized Circular Flap Gates



Application

SERIES N Flap Gates have the exact same design as the **SERIE 60**. They are designed to prevent the reverse flow of water through an opening. A resilient lip seal is used to achieve low leakage between the frame and the flap. Several standardized models are kept in inventory for delivery in just a few days.

**In stock now, adapted
to your application and
delivered in a matter of days**

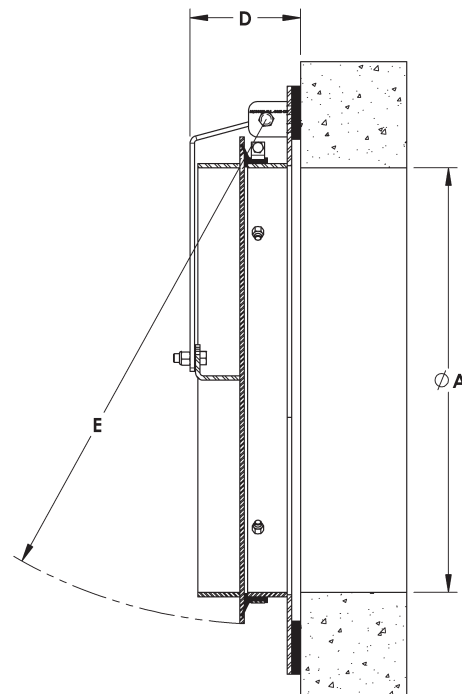
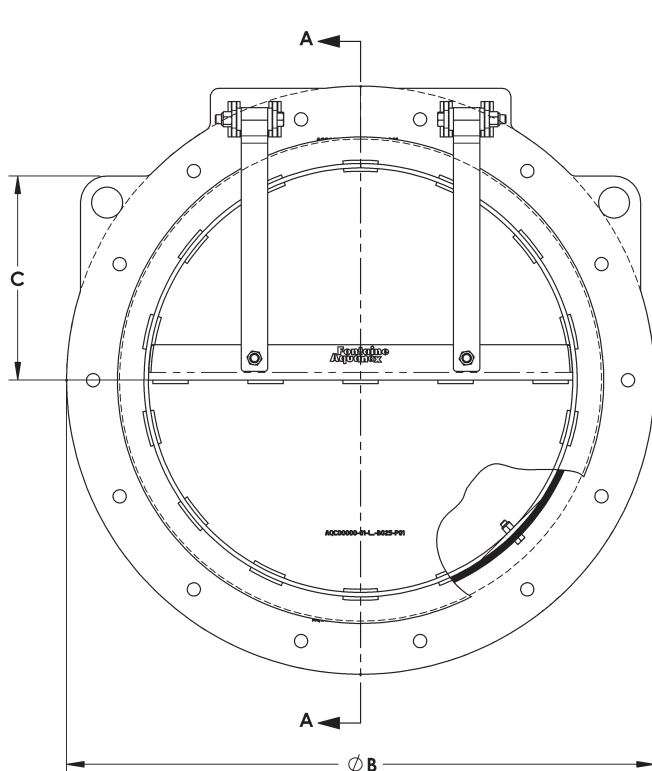
Stainless Steel construction

- Premium quality heavy duty design
- In stock now, adapted to your application and delivered in a matter of days
- 5 year warranty
- Full perimeter sealing
- Guaranteed maximum leakage rate 0.04 gpm/ft [0.5 l/min/m]
- Ultra stiff flange back frame
- ¼" (6mm) minimum plate thickness
- 316/316L grade Stainless Steel



Model NCW

On the face of a concrete wall

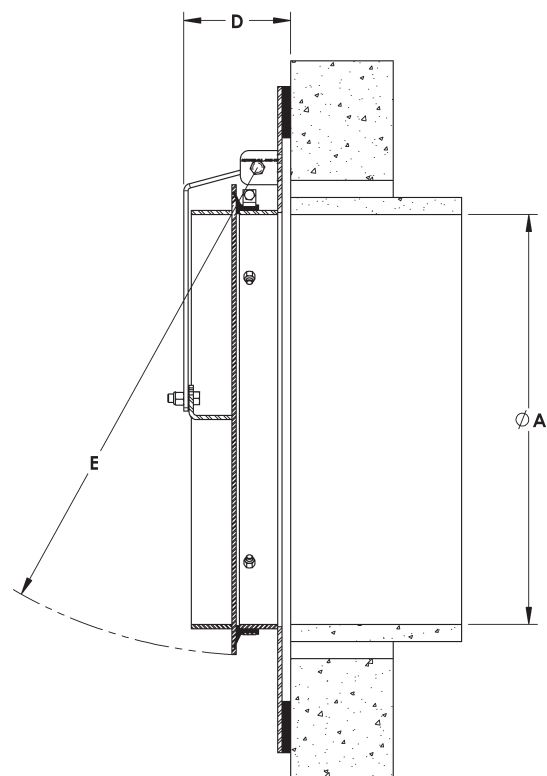
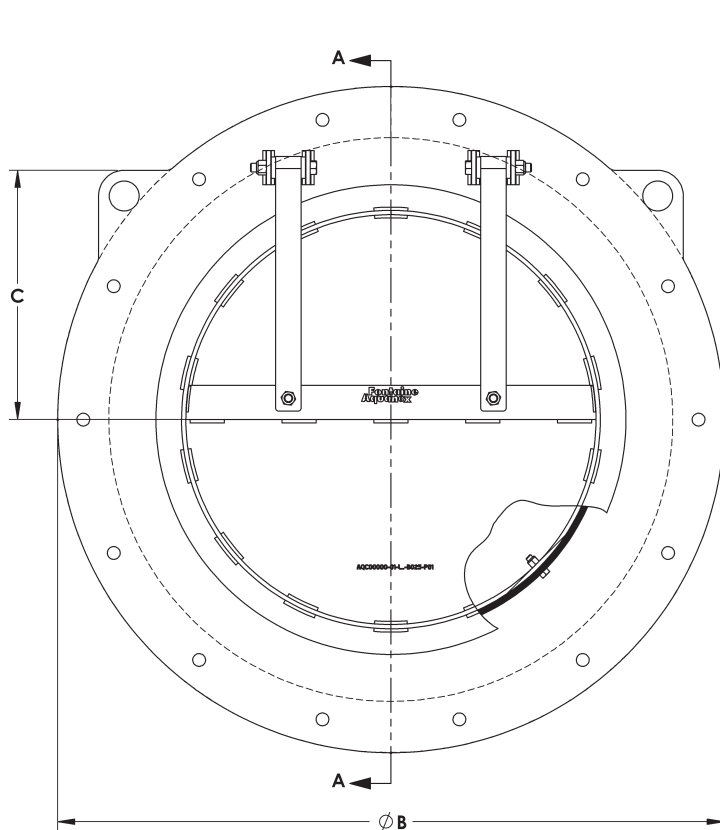


SECTION A-A

A Flap Gate Size		B		C		D		E	
in	mm	in	mm	in	mm	in	mm	in	mm
8	200	17	432	8.13	206	5.13	130	12.31	313
10	250	19	483	8.50	216	5.13	130	14.31	364
12	300	21	533	8.81	224	5.25	133	16.56	421
18	450	27	686	9.75	248	6.25	159	22.56	573
24	600	33	838	13.81	351	6.25	159	28.56	725

Model NCWX

On the face of a concrete wall at
the end of a pipe

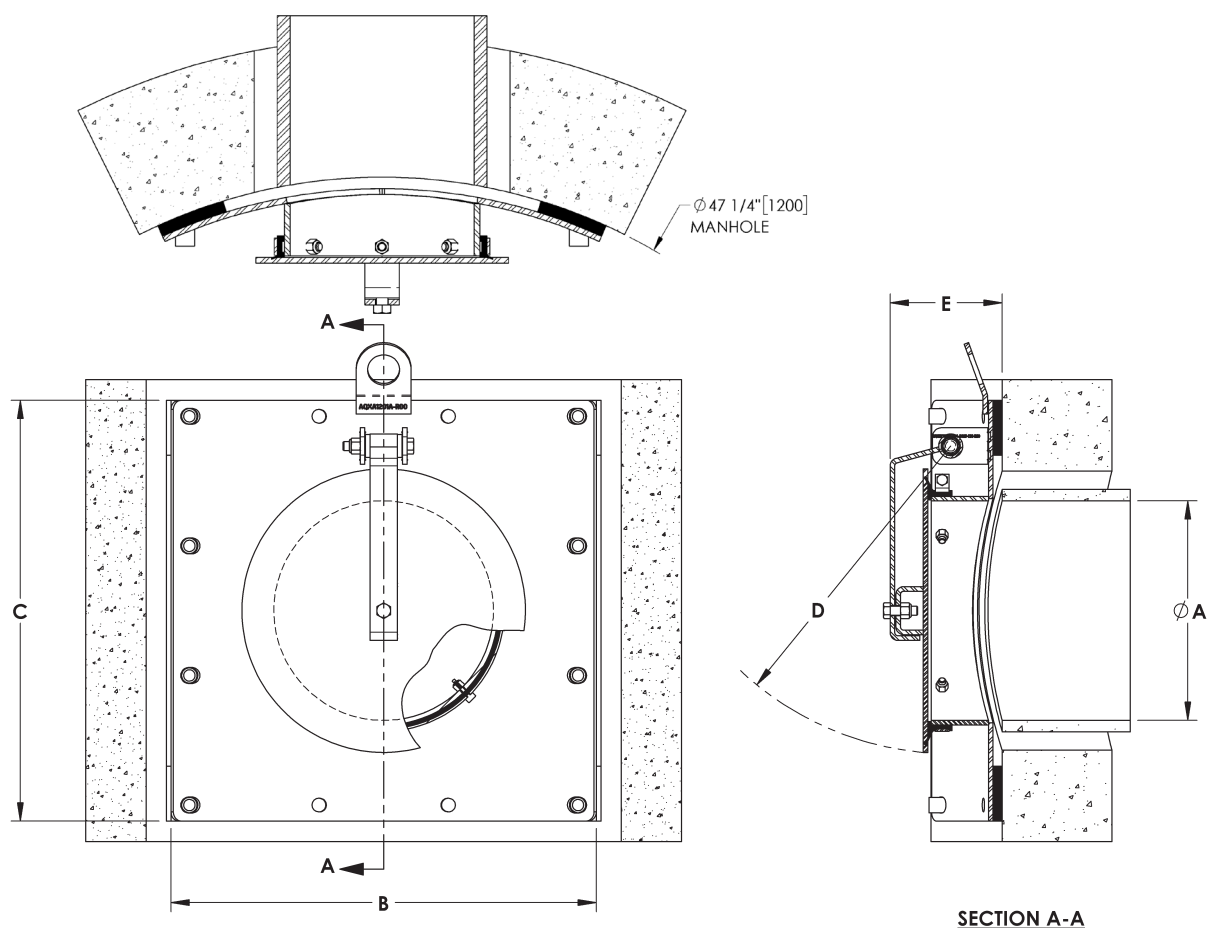


SECTION A-A

A Flap Gate Size		B		C		D		E	
in	mm	in	mm	in	mm	in	mm	in	mm
8	200	20.13	511	9.25	235	5.13	130	12.31	313
10	250	22.13	562	9.56	243	5.13	130	14.31	364
12	300	24.25	616	9.88	251	5.25	133	16.56	421
18	450	34.00	864	14.81	376	6.25	159	22.56	573
24	600	40.50	1029	17.69	449	6.25	159	28.56	725

Model NRMX

Inside a round manhole at the end of a pipe



A Flap Gate Size		B		C		D		E	
in	mm	in	mm	in	mm	in	mm	in	mm
8	200	19.06	484	18.88	479	12.31	313	5.56	141
10	250	21.13	537	20.88	530	14.31	364	5.75	146
12	300	23.25	591	23.00	584	16.56	421	6.13	156

Head office

20, Route de Windsor
Sherbrooke, Quebec Canada
J1C 0E5

Fontaine-Aquanox Plant

4065 Blvd. Portland,
Sherbrooke, Quebec Canada
J1L 1X9

Contact

1 855 769-0157
info@ISEaquanox.com
www.ISEaquanox.com



A Division of ISE Metal Inc.

