



CUBIK SERIES



BLOK collection - 36" OBE double undermount sink

IMAGES (cover page)

OBE

With frame in Oiled walnut WW-201-C
Front panel and shelves in Graphite L-99 satin lacquer
1 ¼" EDGE vanity top in UNIMAR 3.0 White U-00

QUADRA

In Bleached white oak WPO-202-C
1 ¼" EDGE vanity top in UNIMAR 3.0 White U-00

QUADRA+

In Oiled walnut WW-201-C with legs at the front in matte black metal
Countertop in Black Tempal Q-5810 Trend quartz

BLOK

In Muslin M-160-TM and White smoke M-82-SM melamine
Countertop in Cloudburst Concrete Q-4011 Trend quartz

AXIS

In Verso M-273-T melamine
Countertop in Organic White Q-4600 quartz

POWDER ROOM

In Ocean blue S-736-M and White S-734-M sublime. Round mirror with RGB+W LED backlight (A-148 option, see p. 28)
Countertop Zenith white Q-ZEN quartz with semi-recessed SWEET vessel

Note: Vanico-Maronyx reserves the right to change without notice a technical feature, a component or a manufacturing aspect, as deemed necessary.

TECHNICAL SUPPORT

(450) 471-4447 | 1 800 921-9508, ext. 710

quote@vanico-maronyx.com | www.vanico-maronyx.com

INDEX

03

MATERIALS AND COLORS

PRESENTATION of our collections

04

OBE

05

QUADRA

06

QUADRA+

07

BLOK

08

AXIS

09

POWDER ROOM

COMMON FEATURES

10

OBE

12

QUADRA

14

QUADRA+

16

BLOK

18

AXIS

21

POWDER ROOM

22

COUNTERTOP AND SINKS

26

OPTIONS

DIMENSIONS AND PURCHASE ORDER:
see price list booklet

FURNITURE EXTERIOR

MODULE INTERIOR

OBE, BLOK, POWDER ROOM	2-tones or monochrome		
	Color 1	Color 2	
	M Melamine	M Melamine	MELAMINE Charcoal gray
	S Sublime	S Sublime	
	W Wood L Satin lacquer	W Wood L Satin lacquer	
QUADRA, QUADRA+, AXIS	Monochrome		
	M Melamine S Sublime W Wood L Satin lacquer		MELAMINE Charcoal gray

HORIZONTAL HANDLES (only for QUADRA, QUADRA+ and AXIS)

Medium handle
160 mm (6 5/16") c.c.
59 CH Chrome
59 MB Matte black
59 MW Matte white



59 MW

Large handle
320 mm (12 5/8") c.c.
60 CH Chrome
60 MB Matte black
60 MW Matte white



60 MB



OPTION

A-134-S COLOR DEVELOPMENT IN SATIN LACQUER

Custom color developed from a Benjamin Moore paint code. Includes the production of a sample for approval (2-3 weeks lead time). The order will be confirmed once the sample is approved.

PRESENTATION OF OUR COLLECTIONS

OBE



2-tones or monochrome

Storage niche



...in 1 drawer vanity



...in the medicine cabinet



...on the side of linen cabinet

QUADRA



Monochrome

Medicine cabinet



...1 to 3 doors with or without light bridge

Mirror



...sleek design with or without light bridge

Linen cabinet



...1 door or 2 doors with niche

PRESENTATION OF OUR COLLECTIONS

QUADRA+



QUADRA with metallic accents, monochrome

Vanity/linen cabinet



...monochrome with legs

Metal available in
3 finishes:

Chrome

Matte
black

Matte
white

Mirror/medicine cabinet



...1 to 3 doors, mirror or medicine cabinet,
head with metal accent, with or without lighting



2-tones or monochrome

Vanity/linen cabinet



...with finger grip

Medicine cabinets



...1 or 2 doors, niche or drop-down door
with or without light bridge

PRESENTATION OF OUR COLLECTIONS

AXIS



Monochrome

Medicine cabinet



...1 or 2 doors with or without lateral shelves

Linen cabinet



...1 or 2 doors

Dressing table



...compartmented bottom module

POWDER ROOM



2-tones or monochrome

With backlight mirror



...rectangular, with or without light bridge



...round, with or without light bridge

OBE 2-tones or monochrome

VANITY



1 drawer with niche



2 drawers



1 drawer with metal rods



2 drawers without metal rods

1 OR 2 DRAWERS

5/8" thick visible edges on the front.

DRAWER AND HARDWARE

Drawers in charcoal gray melamine with metal sides.

Full extension invisible slides with quiet soft-closing mechanism.

Load capacity 35 kg.

KCMA and BIFMA certified hardware.

WALL-MOUNT LINEN CABINET



2 DOORS LINEN CABINET WITH NICHE, SINGLE OR DOUBLE

1 adjustable shelf in each section.



LINEN CABINET WITH LATERAL NICHE

Lateral niche with 3 fixed shelves.

Full height door that hides a linen cabinet section with adjustable shelves.

MEDICINE CABINET

OFF-CENTERED, CENTERED OR DOUBLE MEDICINE CABINET
WITH OR WITHOUT LIGHT BRIDGE*



Fixed shelves in the niches. Same color as the vanity front panel.



INTERIOR



Adjustable glass shelves inside.



*LIGHT BRIDGE

LED lighting

4000K - neutral white

24V transformer

AUXILIARY MEDICINE CABINET (without lighting)

INTERIOR



1 adjustable glass shelf included.

QUADRA Monochrome

VANITY



1 drawer



2 drawers



1 drawer with metal rods



2 drawers without metal rods

1 OR 2 DRAWERS

5/8" thick visible edges on the front.

DRAWER AND HARDWARE

Drawers in charcoal gray melamine with metal sides.

Full extension invisible slides with quiet soft-closing mechanism.

Load capacity 35 kg.

KCMA and BIFMA certified hardware.

WALL-MOUNT LINEN CABINET



2 DOORS LINEN CABINET WITH NICHE

1 adjustable shelf in each section.



1 DOOR LINEN CABINET, SINGLE OR DOUBLE

1 fixed shelf. 4 adjustable shelves.

MIRROR OR MEDICINE CABINET
WITH OR WITHOUT LIGHT BRIDGE*



Mirror



Medicine cabinet 1 to 3 doors



MEDICINE CABINET

INTERIOR



Adjustable glass shelves inside.

*LIGHT BRIDGE

LED lighting

4000K - neutral white

24V transformer

AUXILIARY MEDICINE CABINET (without lighting)

INTERIOR



1 adjustable glass shelf included.

QUADRA+ Monochrome

VANITY



2 DRAWERS

$\frac{5}{8}$ " thick visible edges on the front.

2 metal legs.

DRAWER AND HARDWARE

Drawers in charcoal gray melamine with metal sides.

Full extension invisible slides with quiet soft-closing mechanism.

Load capacity 35 kg.

KCMA and BIFMA certified hardware.

LINEN CABINET



2 DOORS LINEN CABINET WITH NICHE, SINGLE OR DOUBLE

1 adjustable shelf in each section. 2 metal legs.



1 DOOR LINEN CABINET

1 fixed shelf. 4 adjustable shelves. 2 metal legs.



2 DOORS DOUBLE LINEN CABINET

1 fixed shelf. 4 adjustable shelves. 2 metal legs.

MIRROR OR MEDICINE CABINET, WITH METALLIC ACCENT,
WITH OR WITHOUT LIGHT BRIDGE*



Mirror



Medicine cabinet 1 to 3 doors



MEDICINE CABINET

INTERIOR



Adjustable glass shelves inside.

*LIGHT BRIDGE

LED lighting

4000 K - neutral white

24V transformer

AUXILIARY MEDICINE CABINET (without lighting) and METALLIC ACCENTS

INTERIOR



1 adjustable glass shelf included.

Available in 3 finishes:

Chrome

Matte black

Matte white



BLOK 2-tones or monochrome

VANITY



2 drawers



3 drawers

Top: 1 fixed front panel with 2 small drawers on each side

Bottom: 1 large drawer



2 OR 3 DRAWERS

$\frac{5}{8}$ " thick visible edges on the front.

Finger grip.

DRAWER AND HARDWARE

Drawers in charcoal gray melamine with metal sides.

Full extension invisible slides with quiet soft-closing mechanism.

Load capacity 35 kg.

KCMA and BIFMA certified hardware.

WALL-MOUNT LINEN CABINET



2 DOORS LINEN CABINET

4 adjustable shelves.

Drawer with laundry basket option A-136-LM (3 adjustable shelves if the option is chosen).



4 DOORS DOUBLE LINEN CABINET

4 adjustable shelves (3 adjustable shelves if the option A-136-LM is chosen).

SINGLE OR DOUBLE MEDICINE CABINET WITH OR WITHOUT LIGHT BRIDGE*

MEDICINE CABINET

INTERIOR



Medicine cabine 1 or 2 doors with
1 niche and 1 drop-down door



Medicine cabinet 1 or 2
doors with 2 niches



Adjustable glass shelves inside.



*LIGHT BRIDGE

LED lighting

4000K - neutral white

24V transformer

AUXILIARY MEDICINE CABINET (without lighting)

INTERIOR



1 adjustable glass shelf included.

1 drop-down door at the bottom.

AXIS Monochrome

VANITY



2 DRAWERS

Without visible edge on the front.

DRAWER AND HARDWARE

Drawers in charcoal gray melamine with metal sides.

Full extension invisible slides with quiet soft-closing mechanism.

Load capacity 35 kg.

KCMA and BIFMA certified hardware.

WALL-MOUNT LINEN CABINET



1 DOOR LINEN CABINET

1 fixed shelf. 4 adjustable shelves.



2 DOORS DOUBLE LINEN CABINET

1 fixed shelf.
4 adjustable shelves.

MEDICINE CABINET WITH OR WITHOUT LIGHT BRIDGE*



Medicine cabinet 1 or 2 doors without shelf



Medicine cabinet 1 or 2 doors with shelves



MEDICINE CABINET

INTERIOR



Adjustable glass shelves inside.

*LIGHT BRIDGE

LED lighting
4000K - neutral white
24V transformer

AUXILIARY MEDICINE CABINET (without lighting)

INTERIOR



1 adjustable glass shelf included.

Dressing table version, see page 20.

DRESSING TABLE

TOP



2 adjustable glass shelf included.

1 mirror on each door and a fixed mirror in the center.

Interior LED lighting activated by doors opening.

COMPARTIMENTED DRESSING TABLE

INTERIOR



With GFCI outlet (with USB-A and USB-C ports)

A-127-B (Black) or A-127-W (White)

Specify the finish in the purchase order.

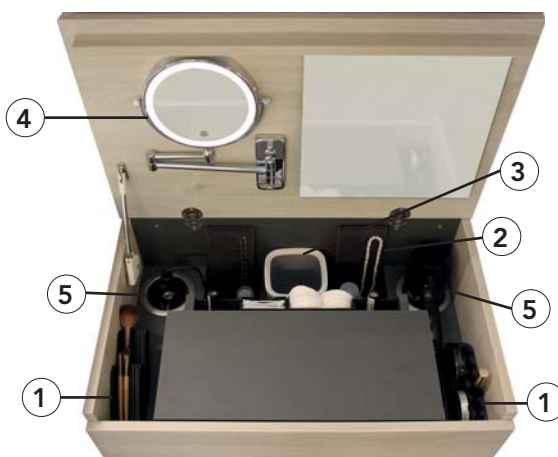
BENCH



Bench with padded vinyl cushion.

Integrated storage niche.

Bench on wheels.



1. 2 cosmetic compartments
2. 2 jewellery compartments and 2 necklace holders
3. Integrated waste basket on the back
4. 1x/5x magnifying mirror:
 - Dimmable LED lighting
 - Warm, neutral and cool lighting color
5. Hairbrush/curling iron holder

VANITY



OBE - 1 drawer



QUADRA - 1 drawer

DRAWER AND HARDWARE

Drawers in charcoal gray melamine with metal sides.

Full extension invisible slides with quiet soft-closing mechanism.

Load capacity 35 kg.

KCMA and BIFMA certified hardware.

MIRROR

MIRROR WITH OR WITHOUT LIGHT BRIDGE



Round mirror with light bridge, shelf and curved towel bars (available in chrome, matte black and white).

White LED backlight.

Can be controlled by a standard lighting switch or dimmer (not included).



Rectangular mirror with shelf and straight towel bars.

White LED backlight.

Can be controlled by a standard lighting switch or dimmer (not included).



RGB (multicolor) + White A-148 available option (see p. 28).

- Can be switched off or on with a lighting switch
- Not compatible with a standard dimmer
- Intensity and color controlled using IOS or Android Tuya mobile app

COUNTERTOP AND SINKS

1 ¼" VANITY TOP IN UNIMAR 3.0

5 widths available

Depth: 19 ⅞"

Matte white oval overflow

Single hole or 8" cc

Choice of the 2 sinks below

WARNING: Any other vanity top model can compromise the interior storage. Additional fees may apply if vanity needs to be modified.



EDGE with overflow

U-00
White



MIO with overflow

U-00
White

Sink in PureSolid white PS-00
Horizontal overflow without trim
Available in 2 sinks version (combine 2 single vanities)

¾" QUARTZ COUNTERTOP WITH UNDERMOUNT SINK

WARNING: Any other sink model can compromise the interior storage. Additional fees may apply if vanity needs to be modified. A surcharge applies for using a sink from another manufacturer.



OBE with overflow

PS-00
White



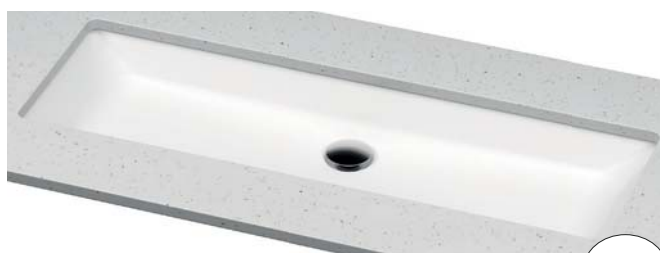
MOMENTO with overflow

PS-00
White



OBE 36 with overflow*

PS-00
White



MOMENTO 36 with overflow*

PS-00
White

*Available only for 48" vanity. Possibility to install 2 faucets (18" cc).



COUNTERTOP AND SINKS

¾" QUARTZ COUNTERTOP WITH VESSEL

Vessel sink in PureSolid white PS-00

WARNING: Any other vessel sink model can compromise the interior storage. Additional fees may apply if vanity needs to be modified. A surcharge applies for using a sink from another manufacturer.



Semi-recessed DREAM

PS-00
White



MOMENTO with faucet deck

PS-00
White



Semi-recessed MUSE

PS-00
White



O with faucet deck

PS-00
White



Semi-recessed SWEET

PS-00
White



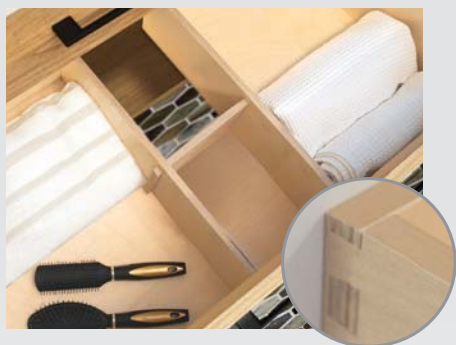
Above counter SWEET

PS-00
White

OPTIONS - VANITY

A-146 LAMINATED BIRCH DRAWER

Dovetail drawers.



A-144 LAMINATED BIRCH DIVIDERS

For bottom drawer and **only if A-146 opposite option is chosen.**



A-142 STAINLESS STEEL FLAT IRON HOLDER

Protective tray (A) to protect the countertop from heat.

Storage holder (B) to store the flat iron.

Available only if A-146 option is chosen. Not available with OBE 2-drawer vanity.



LAUNDRY BASKET



Metal



Laminated birch

A-136-LM LAUNDRY BASKET metal drawer

A-136-LW LAUNDRY BASKET laminated birch drawer

Removable basket with velcro and handles, easy to transport, hidden behind the bottom panel.

100% cotton. Machine washable - see washing instructions on the label.

Important: If A-136: horizontal bottom front handle.

GFCI OUTLET



OBE, QUADRA or QUADRA+*



OBE, lateral niche



QUADRA, QUADRA+ or AXIS



BLOK

GFCI OUTLET with USB-A and USB-C ports

A-127-B Black

A-127-W White

Built-in shutter mechanism on the side of linen cabinet. Right or left except in the case of OBE linen cabinet with lateral niche (the socket is always on the side of the niche). Clipable wall plate.

*6" less deep niche to hide the socket box.

OPTIONS - MIRROR AND MEDICINE CABINET

AM-101 MOOD LIGHTING UNDER MEDICINE CABINET

LED lighting located under the medicine cabinet.
Activated by a motion detector.

Important: Available only when there is light bridge.



GFCI OUTLET with USB-A and USB-C ports **A-127-B Black** **A-127-W White**

Always located on opposite side of the hinges.

Clipable wall plate.



OBE



**QUADRA and
QUADRA+**



BLOK



AXIS

A-24 INTERIOR MIRROR in the back of door

Height: 24". Width: 3" less than the door.

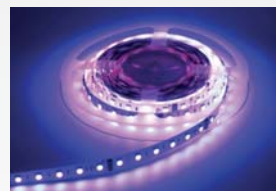
Note that the addition of 2 interior mirrors allows a 360° view.



A-148 RGB (MULTICOLOR) + WHITE LED BACKLIGHT

LED backlight around the round or rectangular mirror which provides both color ambient lighting and white lighting.

- Can be switched off or on with a lighting switch
- Not compatible with a standard dimmer
- Intensity and color controlled using IOS or Android Tuya mobile app



1151 De la Piniere Blvd
Terrebonne (Qc) Canada J6Y 0P3
450.471.4447 – 1.800.921.9508

MADE IN QUEBEC, CANADA



www.vanico-maronyx.com