

FLO WALL-MOUNTED FAUCET

FEATURES

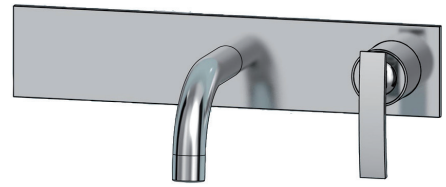
- Solid brass construction
- High quality finish
- Outflow: 2.2 gpm
- LAMINAR anti splatter aerator

INCLUDED

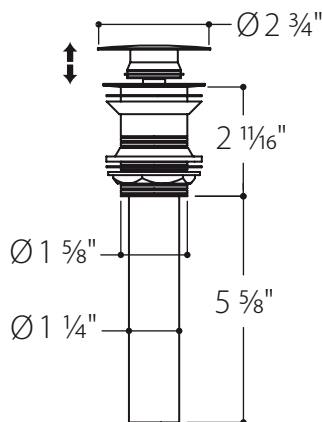
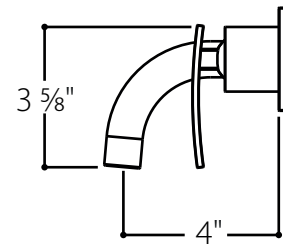
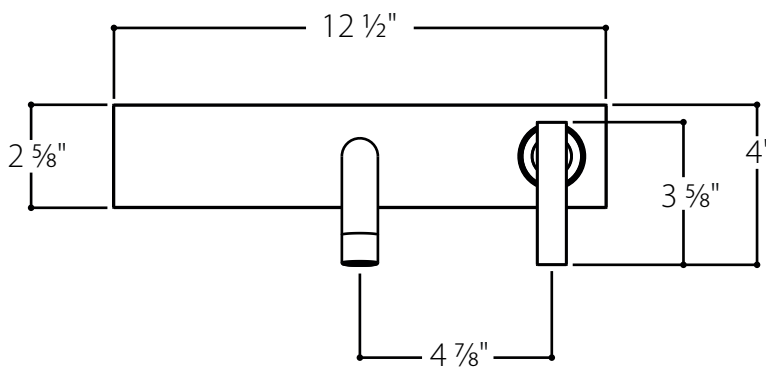
- Two 30" ½ NPT flexible connectors
- 1 ¼" pop-up drain without overflow

FINISH

- Chrome
- Brushed nickel



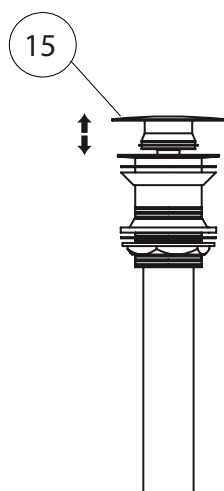
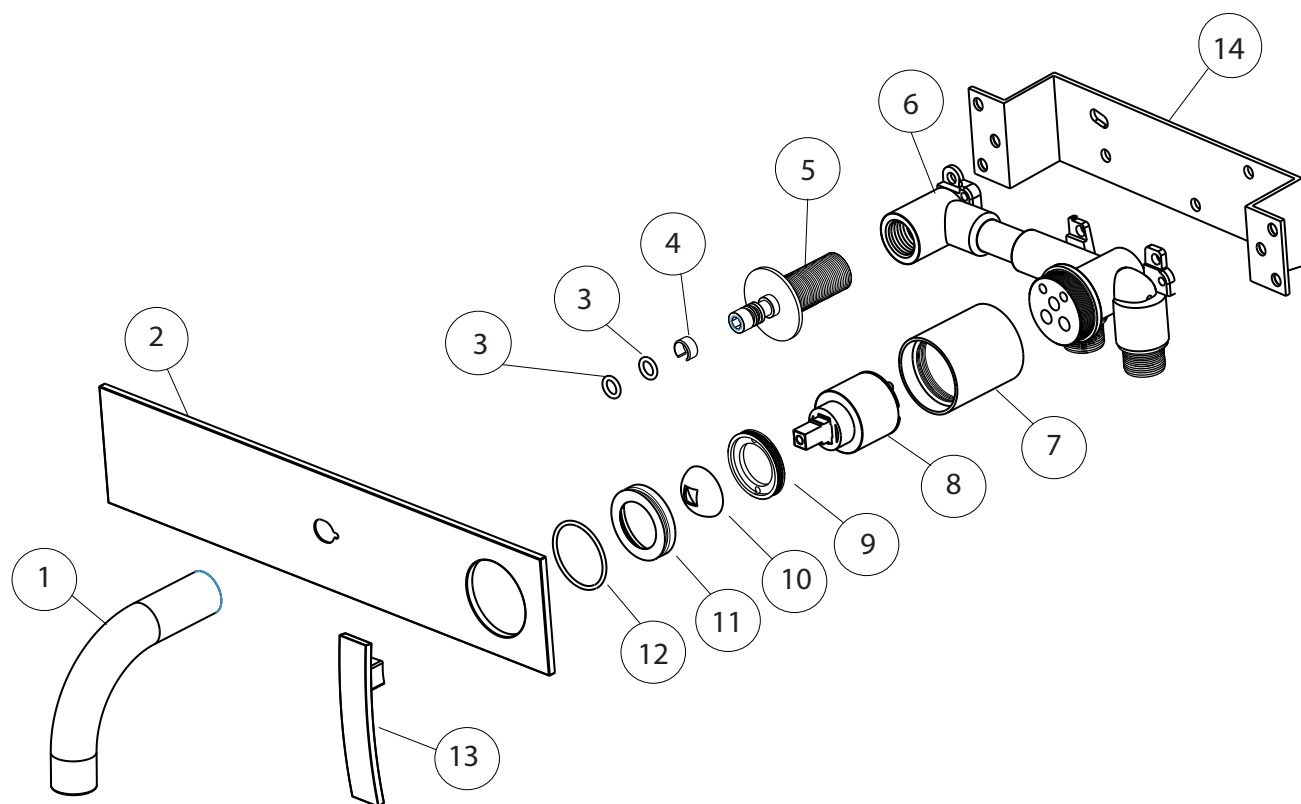
FLO100



FLO WALL-MOUNTED FAUCET

FLO100

Parts:



IT	DESCRIPTIONS	QT
1	Spout	1
2	Plate	1
3	O ring	2
4	Teflon ring	1
5	Insert of spout	1
6	Roughing body	1
7	Cartridge seat ring	1
8	Cartridge	1
9	Cartridge fixing nut	1
10	Chromed nut cover	1
11	Chromed trim ring	1
12	O ring	1
13	Lever	1
14	Bracket	1
15	Pop up drain	1



FLO WALL-MOUNTED FAUCET

Full lifetime warranty

All Vanico-Maronyx faucets carry a full warranty against defects in materials and workmanship.

All mechanical working parts, including ceramic disc cartridges for side valves are covered by our full limited lifetime warranty.

Polished chrome and brushed nickel finishes have a limited lifetime warranty for the original purchaser.

Installation - Faucet Connection:

1. Before you begin, remove the aerator from the end of the faucet spout.
2. Insert the rubber washers in the nuts at the ends of the flexible tubes.
3. To prevent impurities from blocking or damaging the cartridge, it is very important to connect the flexible tubes to the water supply hose and then drain the hoses and flexible tubes in a seal. This precaution is the responsibility of the client and the plumber.
4. Connect the flexible tubes to the faucet, ensuring they are not twisted. Hot water must be on the left and cold water on the right.
5. Turn on the water and test all connections for leaks, tightening if necessary.
6. Drain the water ducts before reinstalling the aerator at the end of the spout.

Product care

To clean your faucet, wash with a wet non-abrasive soapy cloth, then wipe dry with a soft cloth or towel. We recommend performing this maintenance regularly.

Do not use abrasive, chemical, or corrosive products, including powdered cleansers, strong detergents, window cleaners or disinfectants, as they may damage the finish and void the warranty. Toothpaste residues should also be rinsed off promptly.

WARNING

The wall-mount faucet has been assembled and tested at our Vanico-Maronyx factory.

The installer or plumber must perform a water test to verify the watertightness of the connections.

Vanico-Maronyx is not responsible for the installation or the plumbing work carried out at the house of the first buyer.

