





Available wall-mount or floor-mount, p. 6



Medicine cabinet with folding door, p. 8

INDEX

- 4 General features
- 5 Layouts and composition
- 6 Vanity and toe-kick drawer
- 7 Vanity top sink
- 8 Medicine cabinet and lighting
- 8 Backsplash
- 9 Auxiliary medicine cabinet
- 9 Linen cabinet

PRICE LIST

- 10 Vanity and toe-kick drawer
- 11 Medicine cabinet and backsplash
- 12 Linen cabinet
- 13 Vanity top sink

DIMENSIONS

- 14 Dimensions, electricity and plumbing
- 15 Vanity top sink dimensions
- 16 Suggested layouts

Note: VANICO-MARONYX reserves the right to change without notice a technical feature, a component or a manufacturing aspect.

TECHNICAL SUPPORT

(450) 471-4447 | 1 800 921-9508, ext. 710

quote@vanico-maronyx.com | www.vanico-maronyx.com

GENERAL FEATURES

COLLECTION PARTICULARITIES

Urban and stylish, the 16" deep MINI CONDO collection offers a modern solution, perfect for small or medium-sized bathroom.

Style Contemporary (flat doors)

Version Wall-mount or floor-mount with toe-kick drawer option, p.6.

Inside module

Exterior material	Inside always in melamine	Drawers
W Wood	Charcoal gray	Laminated birch wood dovetail
L Satin Lacquer	Charcoal gray	
S Sublime	Charcoal gray	
M Melamine	Charcoal gray	

Wood grain Vanity drawerfront: Horizontal
Everywhere else: Vertical

MINI-16 vanity top sink UNIMAR 3.0
2" H, 16" D Centered, off-centered or double
Small sink to maximize the countertop surface

HIGH-QUALITY HINGES AND SLIDES

European hardware with soft close mechanism.

MINI CONDO...

FOR A STYLISH AND FUNCTIONAL BATHROOM



60" x 60"



60" x 60"



60" x 84"



Polished chrome handle #45-CH included.

VANITY 16" DEEP



off-centered sink
18", 24", 30"



centered sink
24", 30", 36", 42", 48"



2 off-centered sinks
48"



Also available with
toe-kick drawer.

MEDICINE CABINET WITH LED LIGHTING



18"

OPTIONAL UNIMAR 3.0 BACKSPLASH



18" to 48"

LINEN CABINET



12" to 15"



12" to 15" // 18", 24", 30"



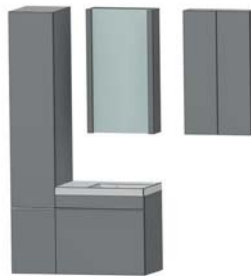
12" to 15" // 48"

Layout examples

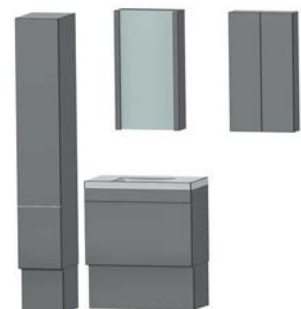
AUXILIARY MEDICINE CABINET



18" to 30"



12" to 15" // 18", 24", 30" // 18" to 30"



12" to 15" // 24", 30", 36", 42", 48" // 18" to 30"

Note: Right or left layout available.

VANITY AND TOE-KICK DRAWER

WALL-MOUNT VANITY

- Fixed panel under the sink.
- Full extension laminated birch dovetail drawer (two drawers in the case of the two sinks 48" vanity).
- A removable 6" wide auxiliary drawer slides on the top of the main drawer (picture below).
- Opening at the back of the vanity for plumbing.



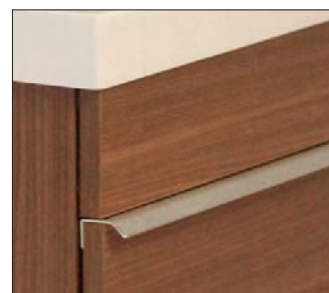
48" vanity with two off-centered sinks.



Full extension opening and auxiliary drawer to optimize storage and functionality.



Dovetail drawers in laminated birch.

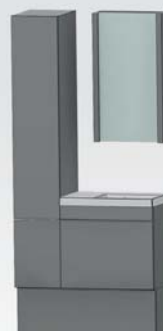


Exclusive polished chrome handle #45-CH included.

OPTION

TOE-KICK DRAWER

Opening with a profiled chrome handle #45CH.



The toe-kick drawer can extend under the linen cabinet if applicable.

UNIMAR 3.0 VANITY TOP SINK MINI-16

Color: White U-00

- One-piece 16" deep vanity top sink.
- Small sink to maximize the countertop surface, but big enough for the daily routine.
- Polished chrome integrated overflow on the back.
- Faucet drilling included: 8" or single hole.
- Faucet positioning: wall-mount or at the back.
- Optional backsplash available.



Drain and faucet not included.



MINI-16 with 2 off-centered sinks, 48" wide. Faucets not included.

MINI-16: MODELS AND AVAILABLE WIDTHS

Finished on 4 sides.



Right or left off-centered sink
18", 24", 30"



Centered sink
24", 30", 36", 42", 48"



Two off-centered sinks
48"

MEDICINE CABINET AND LIGHTING

MEDICINE CABINET AND LIGHTING

- 18" folding door medicine cabinet with 2 adjustable glass shelves.
- Door with 5 mm mirror.
- LED lighting with diffuser discreetly hidden behind the decorative side borders.
- High-performance LED lighting of 4 000 K, neutral white, with one transformer of 20W, 24V.
- Inside color and material, see table p.4.



TRANSFORMER FOR DIMMABLE LIGHTING INCLUDED

The transformer can be connected with any standard dimmer, not included, to vary the intensity of lighting.



BACKSPLASH

Optional UNIMAR 3.0 backsplash 13" high.
Protects against splashing.
Color: White U-00.
Drilling not included.



AUXILIARY MEDICINE CABINET

- Folding opening door with soft close mechanism.
- 2 adjustable glass shelves.
- Inside material and color, see table p. 4.



Folding door auxiliary medicine cabinet

LINEN CABINET

LINEN CABINET

- Wall-mount.
- Toe-kick drawer available in option, see p. 6.
- 5 melamine shelves, 4 are adjustable.
- Exclusive polished chrome handle #45-CH included.
- Soft closing mechanism.
- Inside material and color, see table p. 4.

OPTION

GFCI OUTLET on the side.

Screwless plate with built-in shutter mechanism.

A-127-S5 (stainless steel & black)

A-127-W (white)



TOE-KICK DRAWER

For a floor-mount linen cabinet, the toe kick is a storage drawer (see picture p. 6).



SUGGESTED LAYOUTS

Wall-mount or floor-mount version

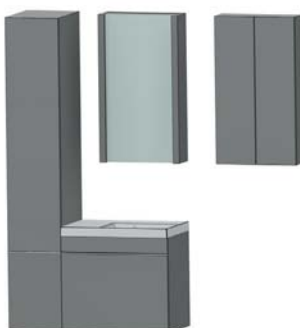
Available left or right.

MINI CONDO COLLECTION

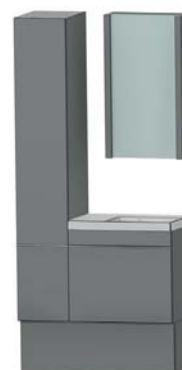
OFF-CENTERED SINK LAYOUTS



18", 24", 30"



12" to 15" // 18", 24", 30" // 18" to 30"



12", 15" // 18", 24", 30"

CENTERED SINK LAYOUTS



24", 30", 36", 42", 48"

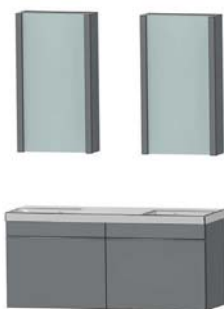


12" to 15" // 24", 30", 36", 42", 48"

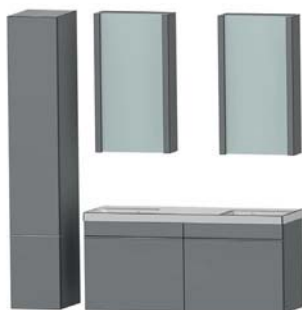


12" to 15" // 24", 30", 36", 42", 48" // 18" to 30"

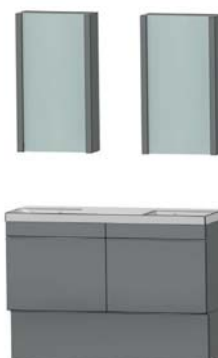
LAYOUTS WITH 2 OFF-CENTERED SINKS



48"



12" to 15" // 48"



48"

OPTION

All layouts are also available with backsplash



UNIMAR 3.0 backsplash