



SKYLINE



PENTHOUSE SERIES



PLAZA 21 undermount sink

IMAGES (cover page)

1 SKYLINE-10

Vanity with glass facade in DIAMANTE pattern, chrome background and white metal frame with mirror

Vanity in satin lacquer Twilight L-15

$\frac{3}{4}$ " Trend quartz countertop Cloudburst concrete Q-4011

2 SKYLINE-16

Vanity, full height medicine cabinet and mirror in wood Oiled walnut WW-201-C, ARCHITECTURAL pattern with brushed gold metallic background

$\frac{3}{8}$ " quartz countertop Tramontana Q-TRA with side waterfalls and

PLAZA 21 undermount sink

3 SKYLINE-18

Vanity and medicine cabinets in wood Moka hickory WPH-253-C

Double vanity top MUSE with side waterfalls in $\frac{1}{2}$ " PureSolid White PS-00

TECHNICAL SUPPORT

(450) 471-4447 | 1 800 921-9508, ext. 710

quote@vanico-maronyx.com | www.vanico-maronyx.com

Note: Vanico-Maronyx reserves the right to change without notice a technical feature, a component or a manufacturing aspect, as deemed necessary.

INDEX

| | |
|----|---|
| 04 | COLLECTION HIGHLIGHTS |
| | PRESENTATION of the 3 models |
| 06 | SKYLINE-10 |
| 06 | SKYLINE-16 |
| 07 | SKYLINE-18 |
| 08 | COMMON FEATURES |
| 10 | VANITY |
| 12 | LINEN CABINET |
| 13 | FULL HEIGHT MEDICINE CABINET |
| 14 | VANITY TOP, COUNTERTOP, PURESOLID AND SINK |
| 22 | MIRROR AND MEDICINE CABINET |
| 25 | PURCHASING PROCESS |

COLLECTION HIGHLIGHTS

REFINED DESIGN



Transform your bathroom with our contemporary SKYLINE vanity. With 13 customizable facades, you can choose from over 500 combinations of materials and finishes to create a space that reflects your style.



Option: Discover our exclusive white integrated handle, designed to create a two-tone effect that will enhance the elegance of your bathroom.

Our quartz countertop is available in two thicknesses: a 3/4" version and a slim 3/8" version, to suit your aesthetic preferences. The PureSolid 1/2" vanity top adds a modern touch to your bathroom.

For an even more sophisticated look, choose our countertop and vanity top with waterfall options. The waterfall effect highlights the material of your countertop and enhances the presence of the facade.



Complete your layout with our slim medicine cabinets of refined proportions, equipped with laminated double-sided mirror doors for a flawless finish.

Discover our full height medicine cabinet, the perfect storage solution when a mirror is used above a vanity.

FEATURES AND HARDWARE

Discover the [Hettich Avantech You](#) drawer system. Designed with a slide of the latest generation, this system offers smooth and quiet operation.

The slim ash metal sides add a modern touch to your furniture. Easily organize your personal belongings with cleverly designed [drawer dividers](#) that optimizes storage space.

Option: The [synchronized push-to-open silent](#) feature allows effortless opening with a single press, even for wider drawers. You can also add the option of integrated lighting for perfect visibility inside your drawers.



The [dressing station option](#) is available across our entire range of medicine and linen cabinets. Designed to meet your beauty and care needs, this feature optimizes your daily routine.



Illuminate your daily routine with the [thoughtfully designed lighting](#) feature in all the products of this collection.

Our mirrors and medicine cabinets benefit from innovative lateral lighting, eliminating any shadowed areas for perfect visibility.

The interior of medicine and linen cabinets is animated by a light transforming each opening into a moment of clarity.

3 VANITY MODELS

SKYLINE-10



The SKYLINE-10 vanity is designed for powder rooms and minimalism enthusiasts. Its 10" height gives it a linear and discreet profile, seamlessly integrating into a clean and modern decor.

SKYLINE-16



The SKYLINE-16 vanity is designed for lovers of minimalist design who are looking for a solution that is both elegant and functional.

Its 16-inch front panel conceals a drawer cleverly divided by adjustable separators.



SKYLINE-18

The SKYLINE-18 vanity embodies the perfect harmony between symmetry and functionality.

Its slim silhouette of a height of 18" and equal drawers appeal to those who appreciate visual balance while maximizing storage.



Customize your space with our versatile range of vanities. Available in three distinct configurations: centered, off-centered, and double.

Express your unique style by choosing from our vast selection of facades.

For a refined finishing touch, choose a contemporary-designed waterfall vanity top.

COMMON FEATURES

MATERIALS

| Furniture | Interior | Facade | Countertop |
|-----------------|----------|--|-------------------|
| T Thermo | Ash | To make a choice, consult the Facades catalogue. | Q Quartz ¾" or ⅝" |
| S Sublime | | | P PureSolid ½" |
| W Wood | | | |
| L Satin lacquer | | | |

DIRECTION OF THE TEXTURE OR WOOD GRAIN

The direction of the grain varies in function of the different types of facades.



HORIZONTAL GRAIN: PURE and METALUX facades in thermo and wood.



VERTICAL GRAIN: METALUX facades in FLUTEX glass and TEXTURED facades.

The direction of the grain of the vanity sides follows that of the chosen facade.
For the linen and medicine cabinets, the direction of the grain is always vertical.
For the mirror, the direction of the grain is always horizontal.

COLOR DEVELOPMENT IN SATIN LACQUER

Custom color developed from a Benjamin Moore paint code. Includes the production of a sample for approval (2-3 weeks lead time). The order will be confirmed once the sample is approved.



A-134-S

COMMON FEATURES

HANDLES INCLUDED



Horizontal handles for vanity

8 3/8" W - 192 mm (7 5/16") c.c.

67 BB

67 MW

67 CH

67 SG

Brushed black

Matte white

Chrome

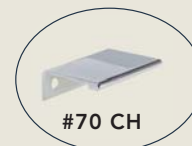
Satin gold

70 BB

70 MW

70 CH

70 SG



#70 CH

Handles for linen cabinet

2 3/4" W - 50 mm (1 15/16") c.c.



PUSH-TO-OPEN SILENT

Always included on the full height medicine cabinet.
Optional on the vanity and linen cabinet.

OPENING SYSTEM



Discover our exclusive facade with integrated PureSolid handle. Consult the Facades catalogue for more details.

INTEGRATED HANDLES



A-162

EXTRA FOR HANDLE #71

Replacement of the standard handle for vanity #67 with handle #71.

Available on select facades only. Price per handle.

23 5/8" W - 480 mm (18 7/8") c.c.

71 MB Matte black

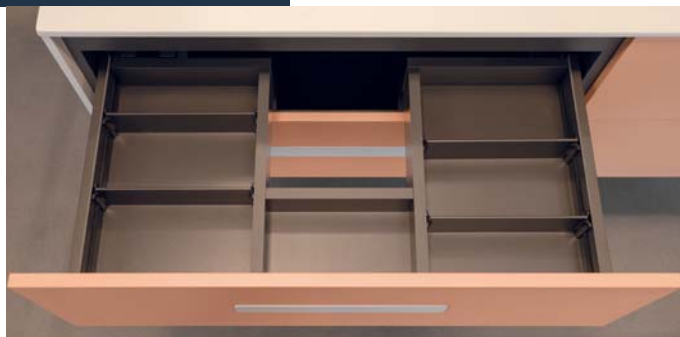
71 MW Matte white

71 BN Brushed nickel

VANITY

The drawers of our SKYLINE vanities are equipped with adjustable dividers to optimize the storage of your personal items.

INTERIOR



Upper drawer - SKYLINE-10 and 18



Bottom drawer - SKYLINE-18 and 16



Hidden drawer - SKYLINE-16



A-150

LIGHTING FOR DRAWER INTERIOR

Automatic activation on opening
Equipped with a rechargeable lithium battery that only requires one charge per year
4000 K
Price per drawer



A-160

CREDIT FOR HIDDEN DRAWER

Available only for SKYLINE-16
Removing the hidden drawer allows for storing taller items
Credit per drawer



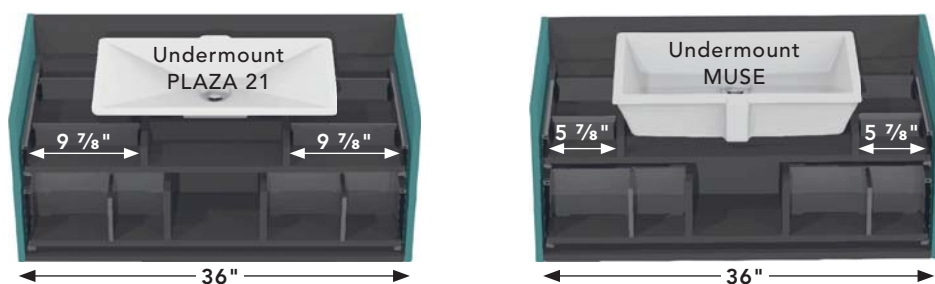
AvanTech YOU

The AvanTech YOU drawer system is distinguished by its outstanding performance, variety of designs, flexible layouts and discreet technology. Use the adjustment capabilities (vertical, lateral and tilt) to obtain reveal alignment for your front panels.

Storage optimization

The storage space is optimized to offer maximum volume depending on the selected sink **for the SKYLINE-16 hidden drawer**. The integration of the **PLAZA** sink maximizes the available storage space in the top drawer of the SKYLINE.

Example: SKYLINE-16



PUSH-TO-OPEN SILENT DRAWER MECHANISM

With the push-to-open silent system, the drawer opens by a slight pressure on the front panel and closes softly and smoothly.

For large drawers, the synchronizing bar allows the mechanism to be activated even when pressing on the edges of the front panel.

Option sold individually, depending on the number of drawers.

LINEN CABINET



Enjoy assisted opening by choosing the push-to-open silent option. Its piston automatically retracts to allow for a soft and smooth closing.



Interior lighting activated by door opening.

Adjustable glass shelves.



Linen cabinet



A-136-LP

LAUNDRY BASKET

Removable basket with velcro and handles, easy to transport.

100% cotton, machine washable.

Available in the linen cabinet only.



A-153-LP

PUSH-TO-OPEN SILENT DOOR MECHANISM

Allows the door to be opened without a handle.

The assisted opening as well as soft and smooth closing, allows retractable piston.

DRESSING STATION (above)

Magnifying mirror (1x/5x, warm, neutral and cold lighting color, USB charging)

1 magnetic bar

2 cosmetic dividers

GFCI combination receptacle type A/C
USB in-wall charger as an option

A-154-L

FULL HEIGHT MEDICINE CABINET



- Push-to-open silent included.
- Interior lighting activated by door opening.
- Laminated double-sided mirror doors.
- Adjustable glass shelves.
- 2 heights available for alignment with the bottom of SKYLINE-16 and SKYLINE-18 vanities.



Linen cabinet and full height medicine cabinet



GFCI OUTLET on the side of linen cabinet or full height medicine cabinet
(black **-B** or white **-W**)

GFCI combination receptacle type A/C USB in-wall charger.

A-327

DRESSING STATION (above)

Magnifying mirror (1x/5x, warm, neutral and cold lighting color, USB charging)

1 magnetic bar, 2 cosmetic dividers, removable waste basket, flat iron and dryer stainless steel holder

GFCI combination receptacle (black **-B** or white **-W**) type A/C USB in-wall charger included

A-154

VANITY TOP AND COUNTERTOP



1/2" vanity top in PureSolid



3/4" quartz countertop



3/8" thin quartz countertop

WATERFALLS



Available for PureSolid vanity tops and quartz countertops.

The side waterfalls are the same thickness as the countertop:

- 1/2" PureSolid
- 3/4" quartz
- 3/8" quartz

These waterfalls highlight the material of your countertop, adding a touch of visual continuity to your space.



PURESOLID AND VANITY TOP

MATERIAL FOR VANITY TOP

PURESOLID®

PURESOLID is an advanced engineering composite that combines a natural mineral with innovative acrylic resin.



FEATURES

- Vanity top with side waterfalls available
- Thickness ½"
- 5 models of vanity tops available
- Horizontal overflow without trim



OBE



MOMENTO



MUSE



Satin finish

Soft to the touch, beautifully crafted by our experts.



Solid as rock

Ultra-dense composition providing a lifetime of worry-free usage.



Non-porous and easy to maintain

Hygienic, easy to clean and restorable to its original state.



UV ray, fire and heat-resistant

➤ Single hole, 8" cc or without drilling



PLAZA 21



PLAZA 42*

SINK BRIDGE



Available for PLAZA 42 vanity top
In PureSolid
Dimensions: 14" x 6 1/4"

*Available only with 48" vanity.

Possibility to install two faucets (18" cc).



UNDERMOUNT SINK

FEATURES

- 7 models of undermount sinks available
- PureSolid White PS-00
- Horizontal overflow without trim



PLAZA 21



MOMENTO



OBE



MUSE



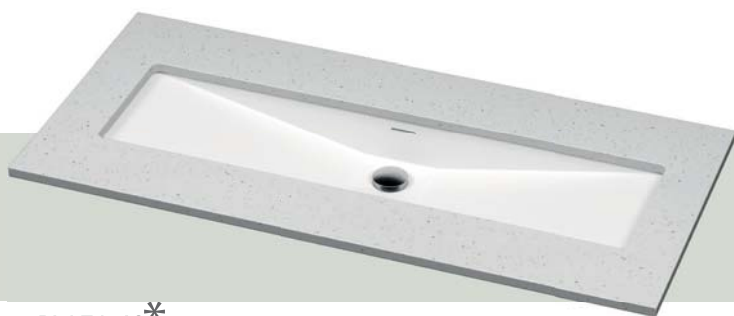
3/4" quartz countertop



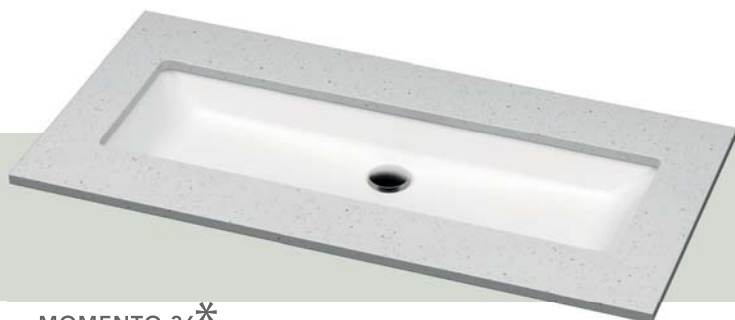
3/8" quartz countertop

UNDERMOUNT SINK

! WARNING: Any other sink model can compromise the interior storage.
Additional fees may apply if vanity needs to be modified.
A surcharge applies for using a sink from another manufacturer.



PLAZA 42*



MOMENTO 36*



OBE 36*

SINK BRIDGE



Available for undermount sinks:

- PLAZA 42
- OBE 36
- MOMENTO 36

In PureSolid

Dimensions: 14" x 6 1/4"

*Compatible only with 48" vanity.
Possibility to install two faucets (18" cc).



VESSEL SINK

FEATURES

- 6 models of vessel sinks available
- PureSolid White PS-00



MUSE semi-recessed



SWEET semi-recessed



DREAM semi-recessed



SWEET above counter

! **WARNING:** Any other vessel sink model can compromise the interior storage. Additional fees may apply if vanity needs to be modified. A surcharge applies for using a sink from another manufacturer.



MOMENTO with faucet deck



O with faucet deck

MIRROR AND MEDICINE CABINET



12" mirror and medicine cabinet

Our ultra-slim 4 ½" medicine cabinet seamlessly blends with a 2"-deep central mirror. Integrated lateral lighting enhances this ensemble, creating a piece that's as elegant as it is practical.



18" medicine cabinet

12" or 18" medicine cabinet



A-155

DRESSING STATION FOR MEDICINE CABINET

-12 (for 12" medicine cabinet)

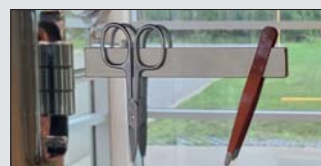
-18 (for 18" medicine cabinet)

Magnifying mirror (1x/5x, warm, neutral and cold lighting color, USB charging)

1 magnetic bar

Cosmetic divider

GFCI not included



MIRROR AND MEDICINE CABINET



12" medicine cabinet



Laminated double-sided mirror doors
 Mirror in the back of medicine cabinet door
 Interior lighting activated by door opening
 4000 K side lighting
 Color rendering index (CRI, see p. 24) > 90
 (provides very accurate color representation)
 Cristallo hinge



18" medicine cabinet

12" medicine cabinet

GFCI OUTLET AND COSMETIC DIVIDER

(black -**B** or white -**W**)

GFCI combination receptacle type A/C

USB in-wall charger

1 cosmetic divider



A-156

STAINLESS STEEL TOWEL BAR

Can be installed under A-156 option



A-158-P

18" medicine cabinet

GFCI OUTLET AND STAINLESS STEEL COMPARTMENT

(black -**B** or white -**W**)

GFCI combination receptacle type A/C

USB in-wall charger

1 stainless steel compartment

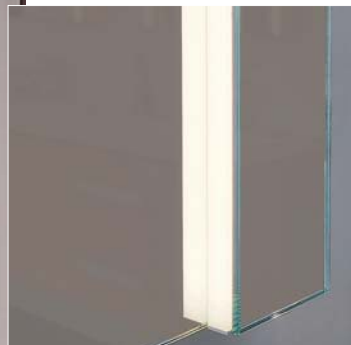


A-157

MIRROR



Mirror with 4000 K side lighting



CRI (Color rendering index)

The CRI measures the ability of a light source to reveal colors of objects in contrast to a natural light source. It determines whether colors appear true and accurate. All LED lighting in the Penthouse series has a CRI of over 90%.

TOWEL BAR

In PureSolid



A-158-M

Dimensions: 10 $\frac{3}{8}$ " x 2 $\frac{1}{2}$ "

The finely customizable products in style and configuration, along with the numerous options in the SKYLINE collection allow you to create furniture that represents your version of comfort. Here is how to design your custom furniture.

Measure the available space in the bathroom and determine your needs.

1

Choose a vanity type: SKYLINE-10, 16 or 18. Add the desired options.

2

Choose a linen cabinet or full height medicine cabinet. Add the desired options.

3

Choose a quartz countertop with a sink or a vanity top.

4

Choose a mirror, a mirror/medicine cabinet or a medicine cabinet. Add the desired options.

5

Choose the materials and finishes for the furniture, countertop and handles.

6

Consult the Facades catalogue to select the style and finish of the accent facade.

7





1151 De la Piniere Blvd
Terrebonne (Qc) Canada J6Y 0P3
450.471.4447 – 1.800.921.9508

MADE IN QUEBEC, CANADA



www.vanico-maronyx.com